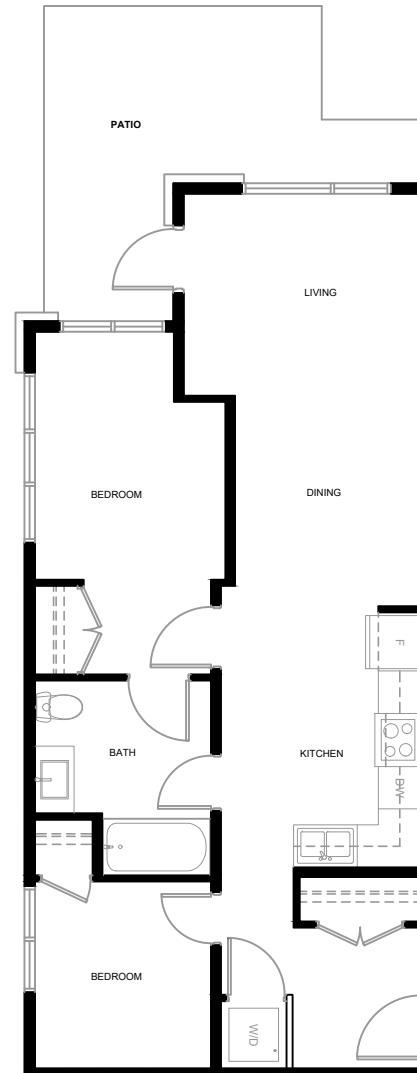




2590 Lonsdale Ave. North Vancouver, BC

UNIT B1

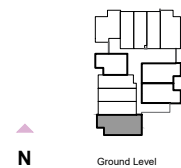
Two Bedroom
Adaptable
One Bathroom
Approx. 745 SF



UNIT B1

TWO BEDROOM
ADAPTABLE
ONE BATH
APPROX 754 SF

All dimensions are approximate and no responsibility is taken for any error, omission or misstatement. Size and specifications are subject to change without notice. This plan is for illustrative purposes only and should be used as such.





2590 Lonsdale Ave. North Vancouver, BC

UNIT B2

Two Bedroom

Two Bathroom

Approx. 782 SF



N

Level 5

All dimensions are approximate and no responsibility is taken for any error, omission or misstatement. Size and specifications are subject to change without notice. This plan is for illustrative purposes only and should be used as such.



2590 Lonsdale Ave. North Vancouver, BC

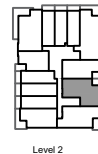
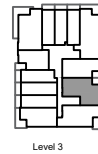
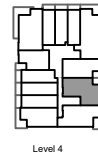
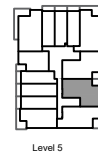
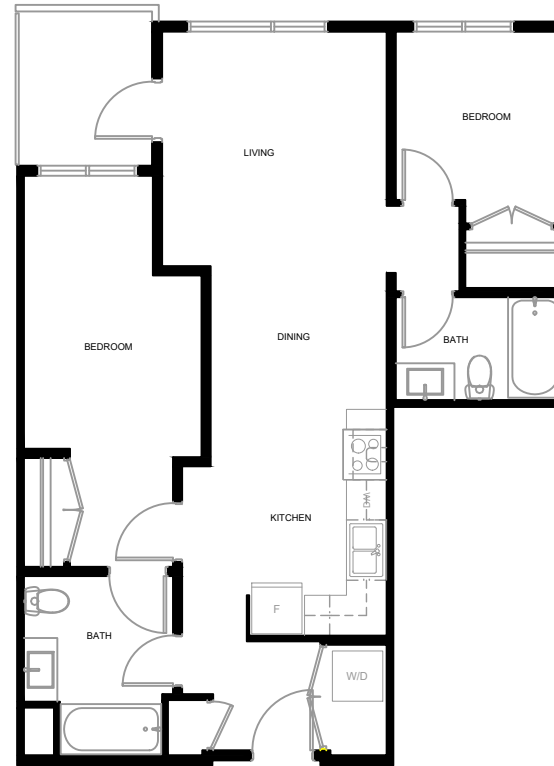
UNIT B3

Two Bedroom

Adaptable

Two Bathroom

Approx. 810 SF



All dimensions are approximate and no responsibility is taken for any error, omission or misstatement. Size and specifications are subject to change without notice. This plan is for illustrative purposes only and should be used as such.



2590 Lonsdale Ave. North Vancouver, BC

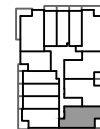
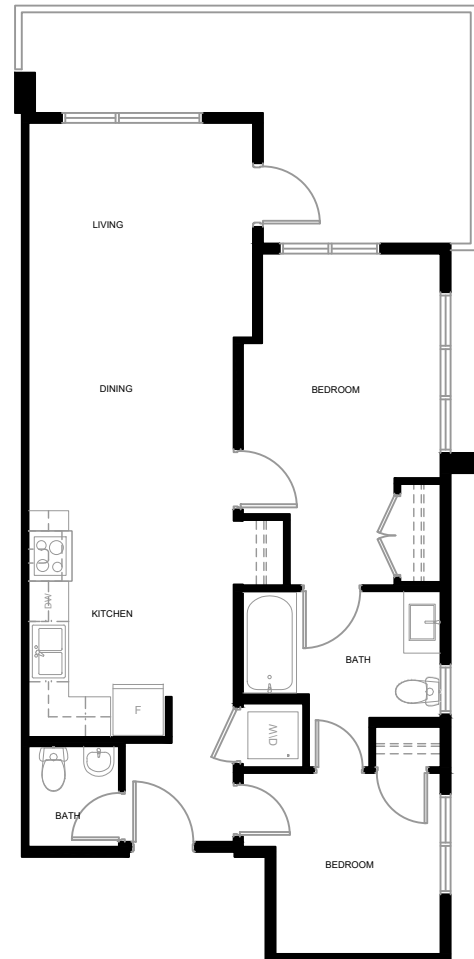
UNIT B4

Two Bedroom

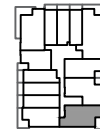
Adaptable

Two Bathroom

Approx. 775 SF



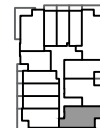
Level 5



Level 4



Level 3



Level 2



All dimensions are approximate and no responsibility is taken for any error, omission or misstatement. Size and specifications are subject to change without notice. This plan is for illustrative purposes only and should be used as such.