



2590 Lonsdale Ave. North Vancouver, BC

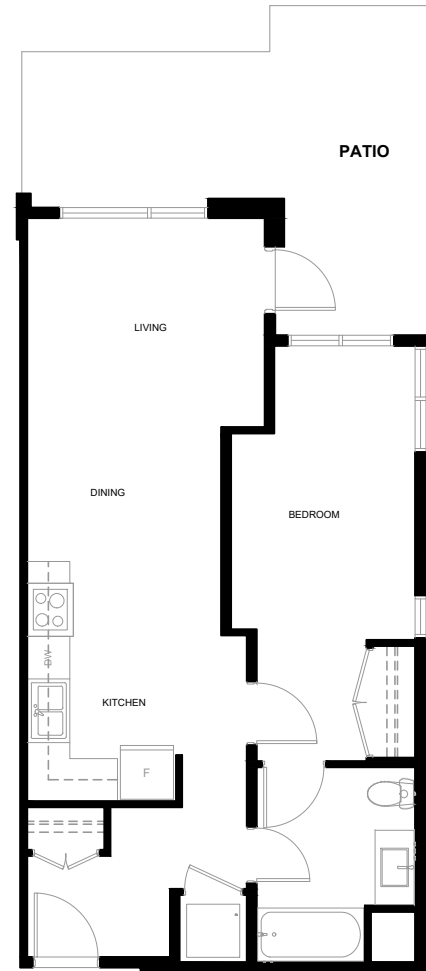
### UNIT A0

One Bedroom

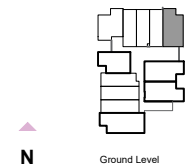
Adaptable

One Bathroom

Approx. 645 SF



All dimensions are approximate and no responsibility is taken for any error, omission or misstatement. Size and specifications are subject to change without notice. This plan is for illustrative purposes only and should be used as such.





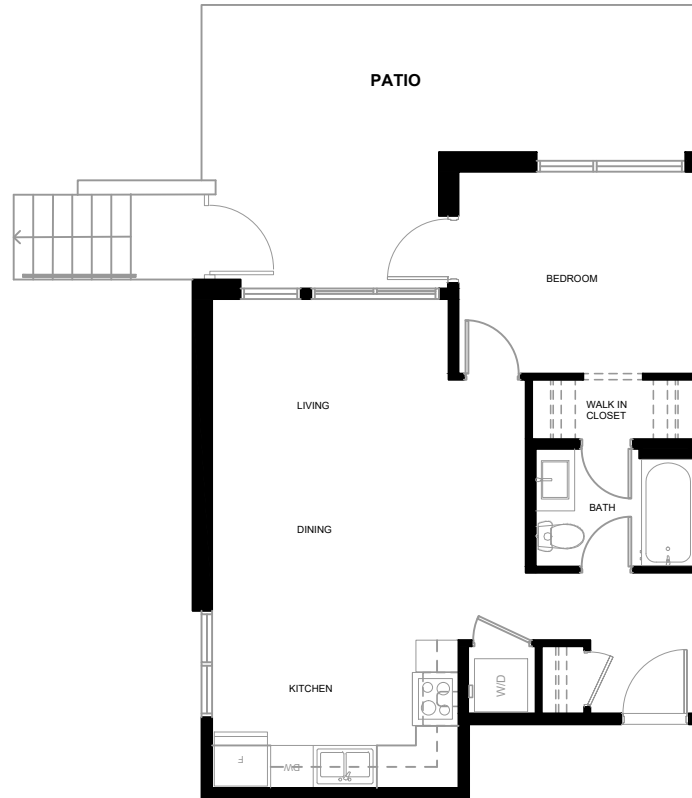
2590 Lonsdale Ave. North Vancouver, BC

### UNIT A1

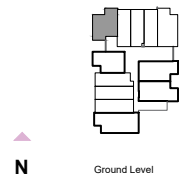
One Bedroom

One Bathroom

Approx. 600 SF



All dimensions are approximate and no responsibility is taken for any error, omission or misstatement. Size and specifications are subject to change without notice. This plan is for illustrative purposes only and should be used as such.



Ground Level



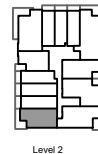
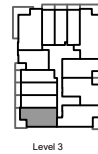
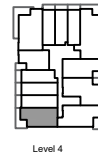
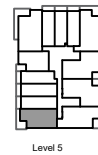
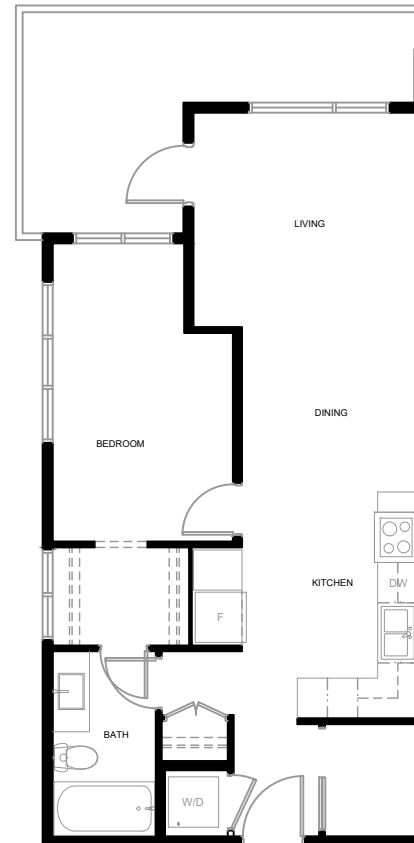
2590 Lonsdale Ave. North Vancouver, BC

## UNIT A2

One Bedroom

One Bathroom

Approx. 656 SF



All dimensions are approximate and no responsibility is taken for any error, omission or misstatement. Size and specifications are subject to change without notice. This plan is for illustrative purposes only and should be used as such.



2590 Lonsdale Ave. North Vancouver, BC

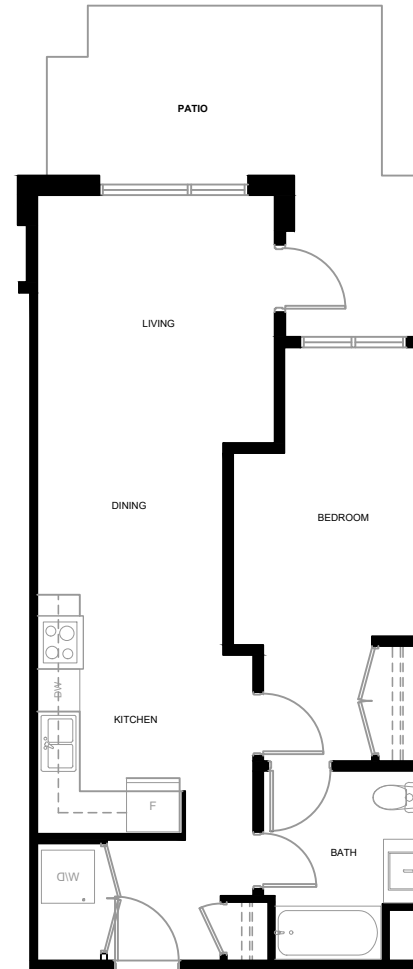
### UNIT A3

One Bedroom

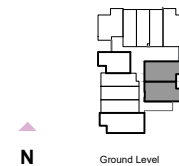
Adaptable

One Bathroom

Approx. 645 SF



All dimensions are approximate and no responsibility is taken for any error, omission or misstatement. Size and specifications are subject to change without notice. This plan is for illustrative purposes only and should be used as such.





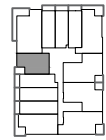
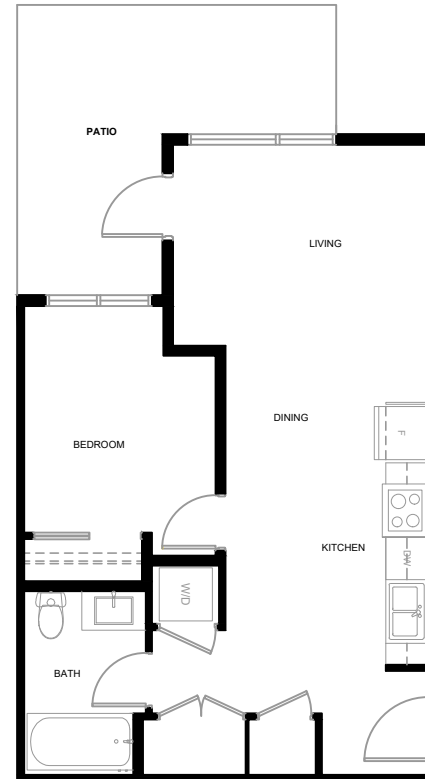
2590 Lonsdale Ave. North Vancouver, BC

### UNIT A4

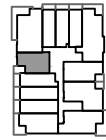
One Bedroom

One Bathroom

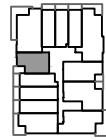
Approx. 548 SF



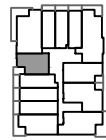
Level 5



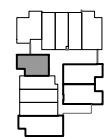
Level 4



Level 3



Level 2



Ground Level

All dimensions are approximate and no responsibility is taken for any error, omission or misstatement. Size and specifications are subject to change without notice. This plan is for illustrative purposes only and should be used as such.

