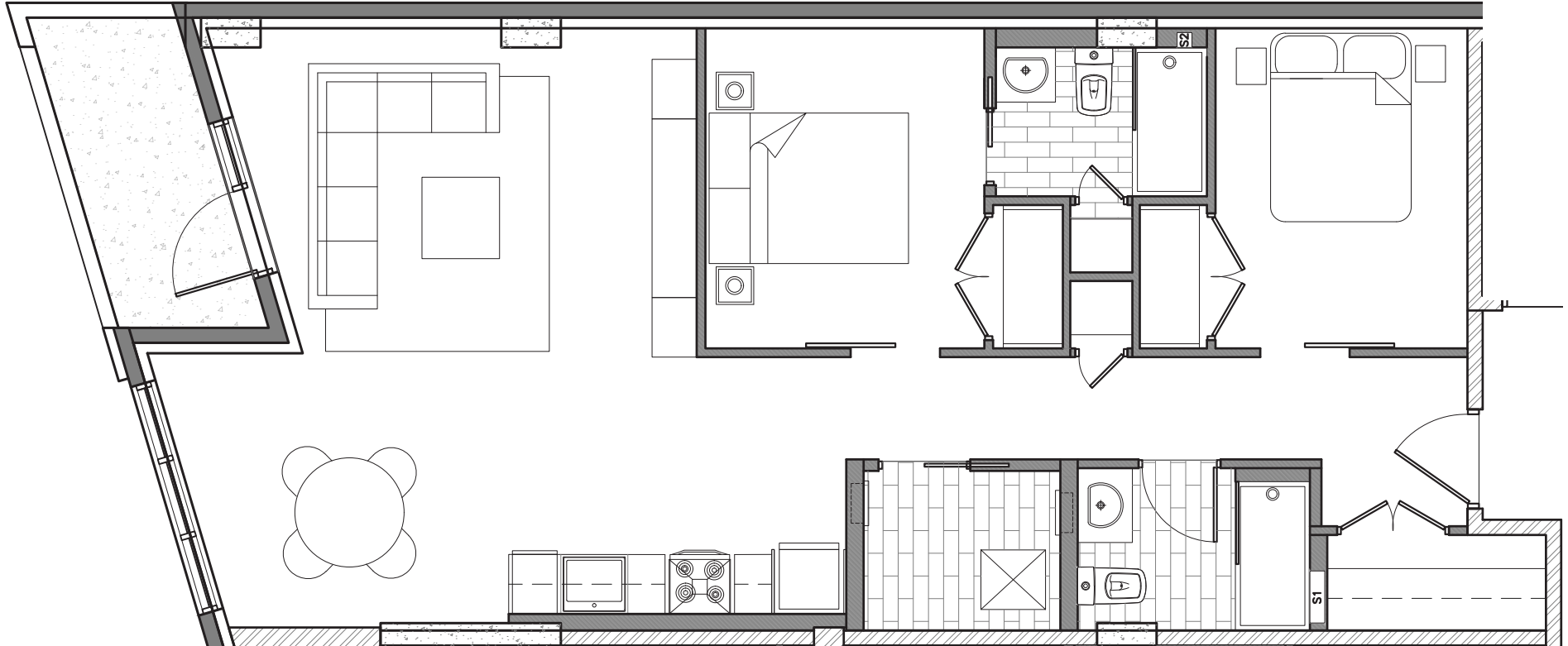


GRAFTON PARK

1537 Brunswick St Halifax, Nova Scotia

Unit 201



1 Bedroom - 1 Bathroom - 655 sq ft.

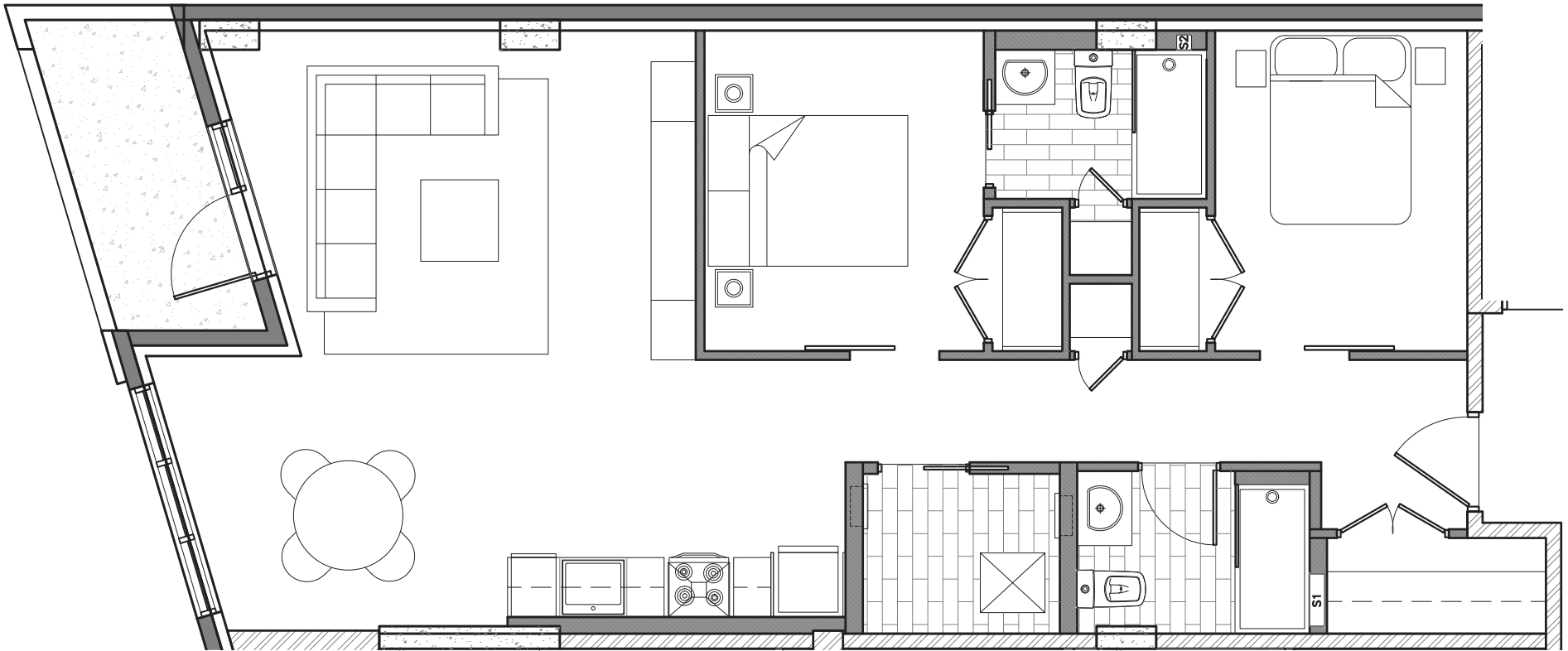
All dimensions are approximate and no responsibility is taken for any error, omission or misstatement.

Size and specifications are subject to change without notice. This plan is for illustrative purposes only and should be used as such.

GRAFTON PARK

1537 Brunswick St Halifax, Nova Scotia

Units 301, 401, 501



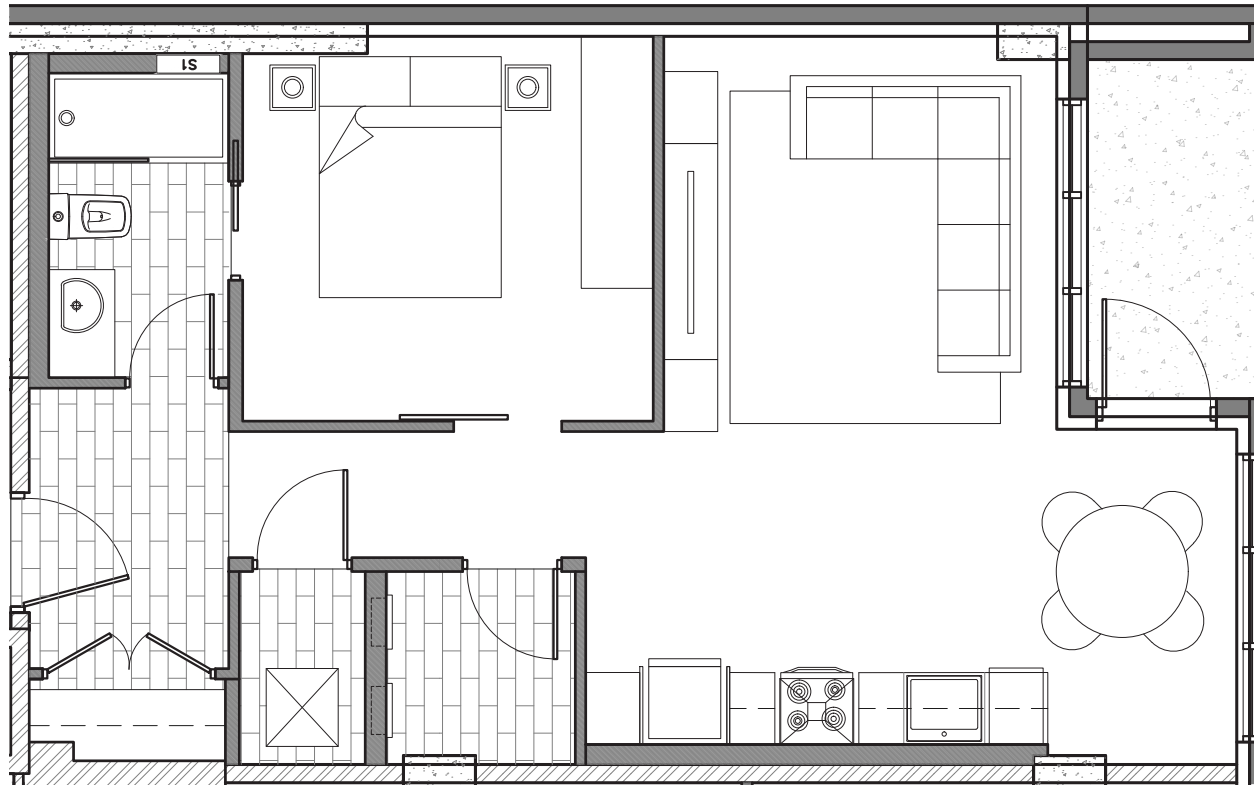
2 Bedroom - 2 Bathroom - 850sq ft.

All dimensions are approximate and no responsibility is taken for any error, omission or misstatement. Size and specifications are subject to change without notice. This plan is for illustrative purposes only and should be used as such.

GRAFTON PARK

1537 Brunswick St Halifax, Nova Scotia

Units 202, 302, 402, 502



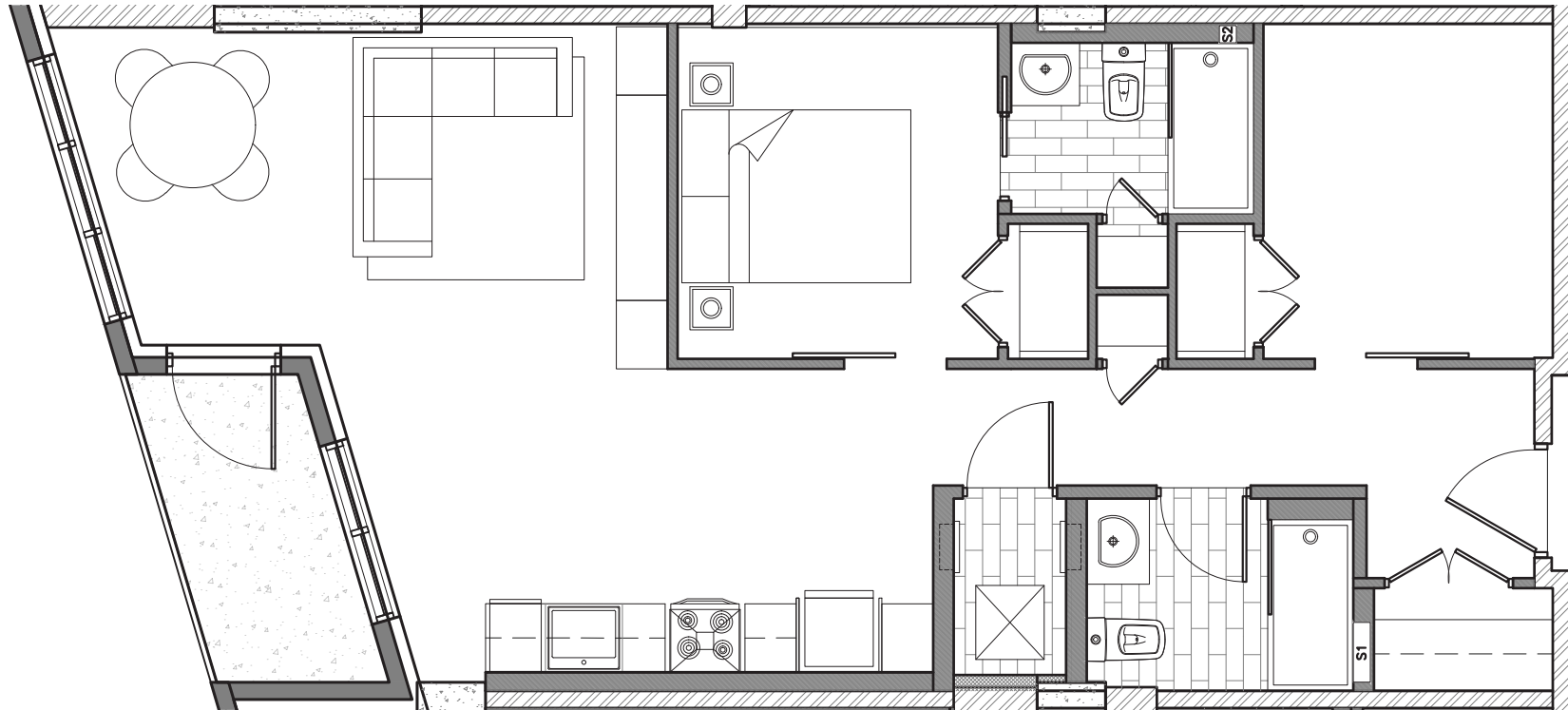
1 Bedroom - 1 Bathroom - 620 sq ft.

All dimensions are approximate and no responsibility is taken for any error, omission or misstatement. Size and specifications are subject to change without notice. This plan is for illustrative purposes only and should be used as such.

GRAFTON PARK

1537 Brunswick St Halifax, Nova Scotia

Units 203, 303, 403, 503



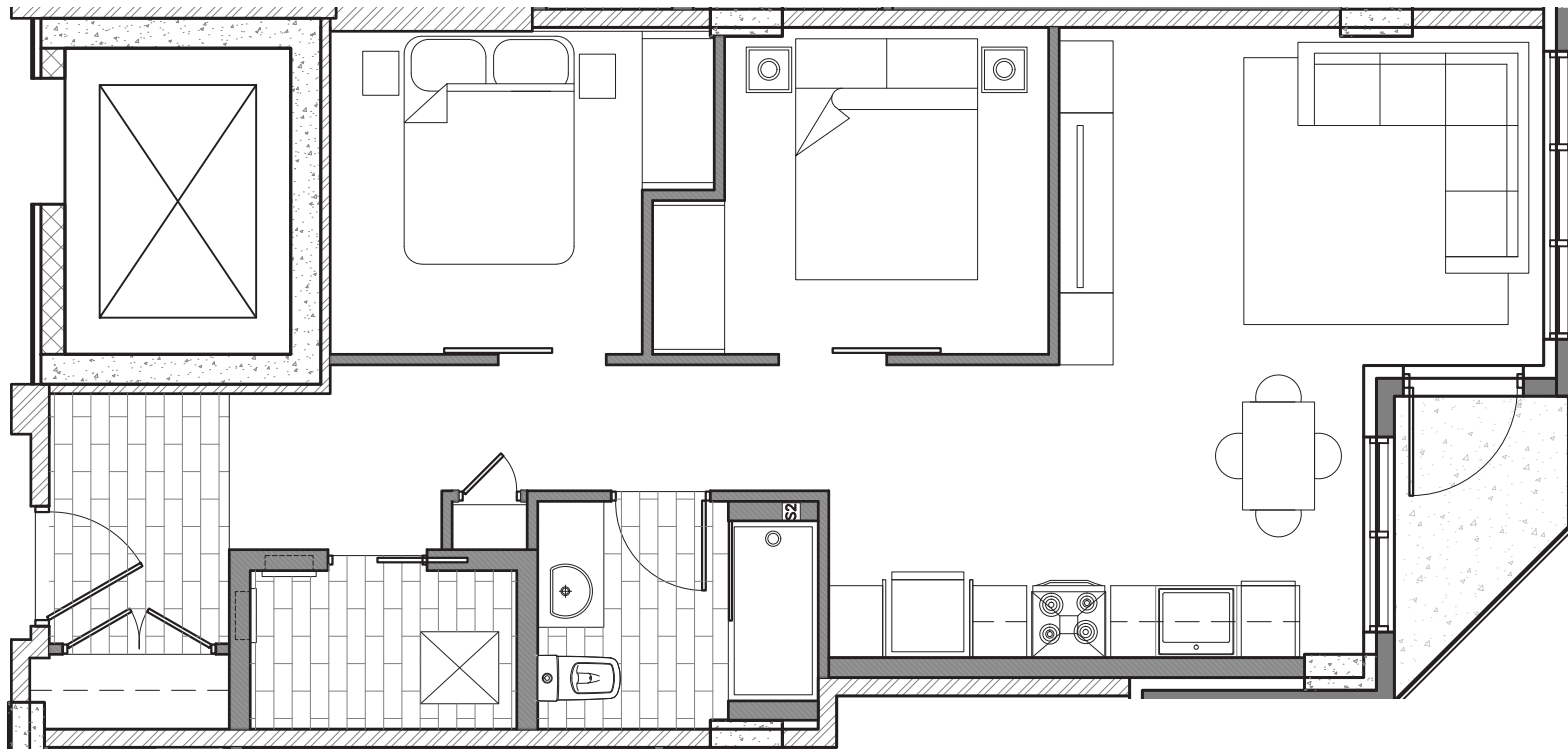
2 Bedroom - 2 Bathroom - 745 sq ft.

All dimensions are approximate and no responsibility is taken for any error, omission or misstatement. Size and specifications are subject to change without notice. This plan is for illustrative purposes only and should be used as such.

GRAFTON PARK

1537 Brunswick St Halifax, Nova Scotia

Units 204, 304, 404, 504



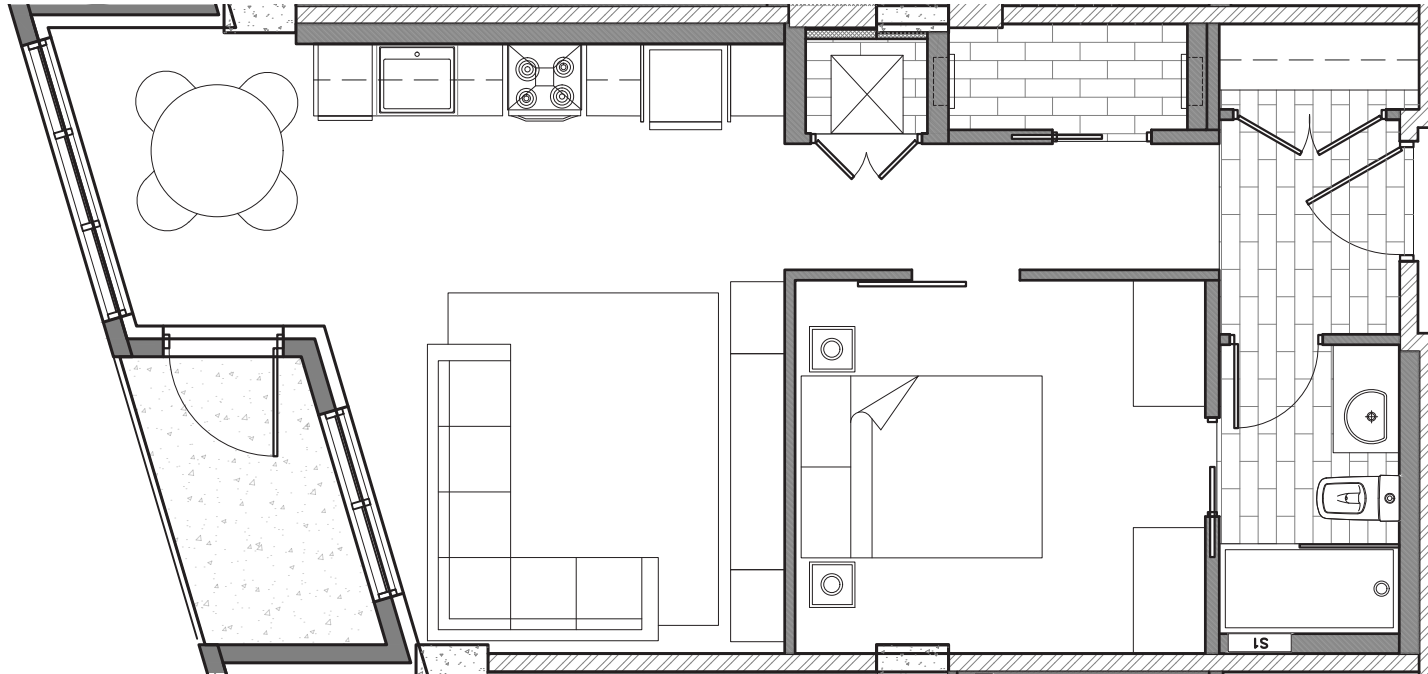
2 Bedroom - 1 Bathroom - 655 sq ft.

All dimensions are approximate and no responsibility is taken for any error, omission or misstatement. Size and specifications are subject to change without notice. This plan is for illustrative purposes only and should be used as such.

GRAFTON PARK

1537 Brunswick St Halifax, Nova Scotia

Units 205, 305, 405, 505



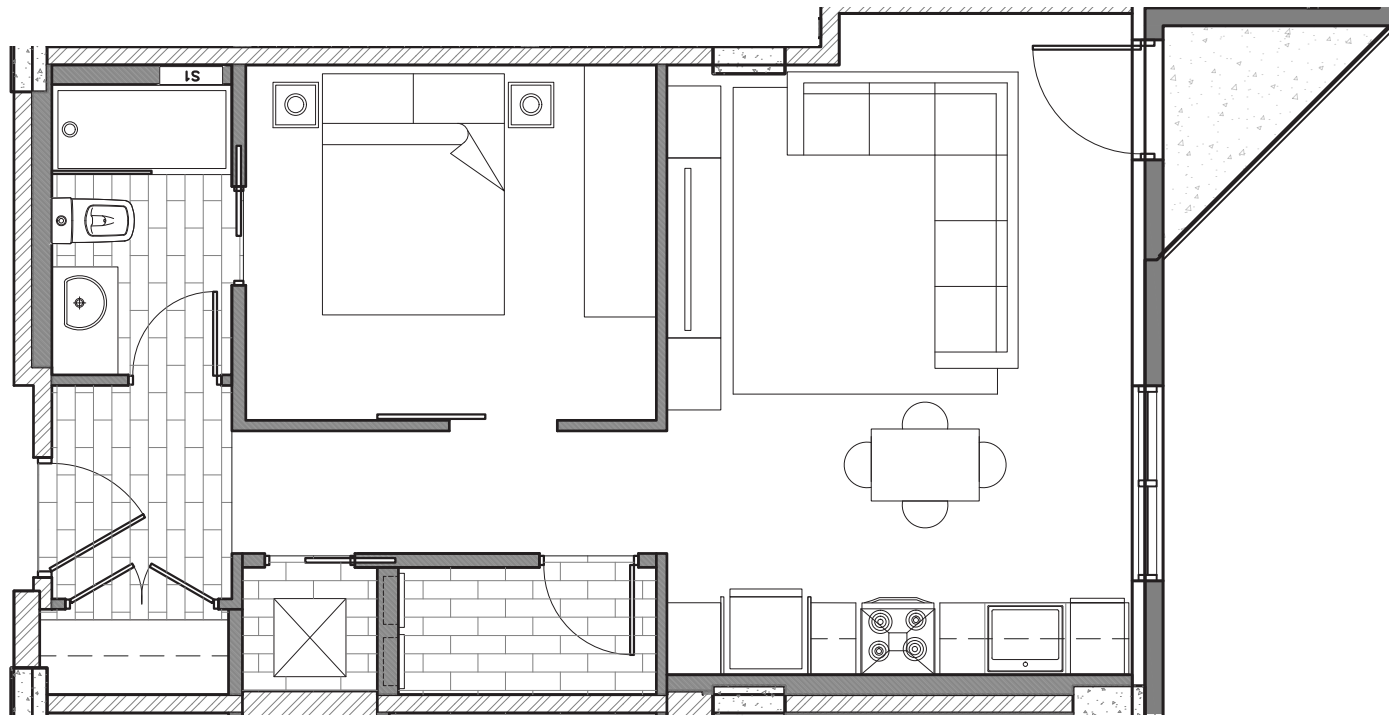
1 Bedroom - 1 Bathroom - 570 sq ft.

All dimensions are approximate and no responsibility is taken for any error, omission or misstatement. Size and specifications are subject to change without notice. This plan is for illustrative purposes only and should be used as such.

GRAFTON PARK

1537 Brunswick St Halifax, Nova Scotia

Units 206, 306, 406, 506



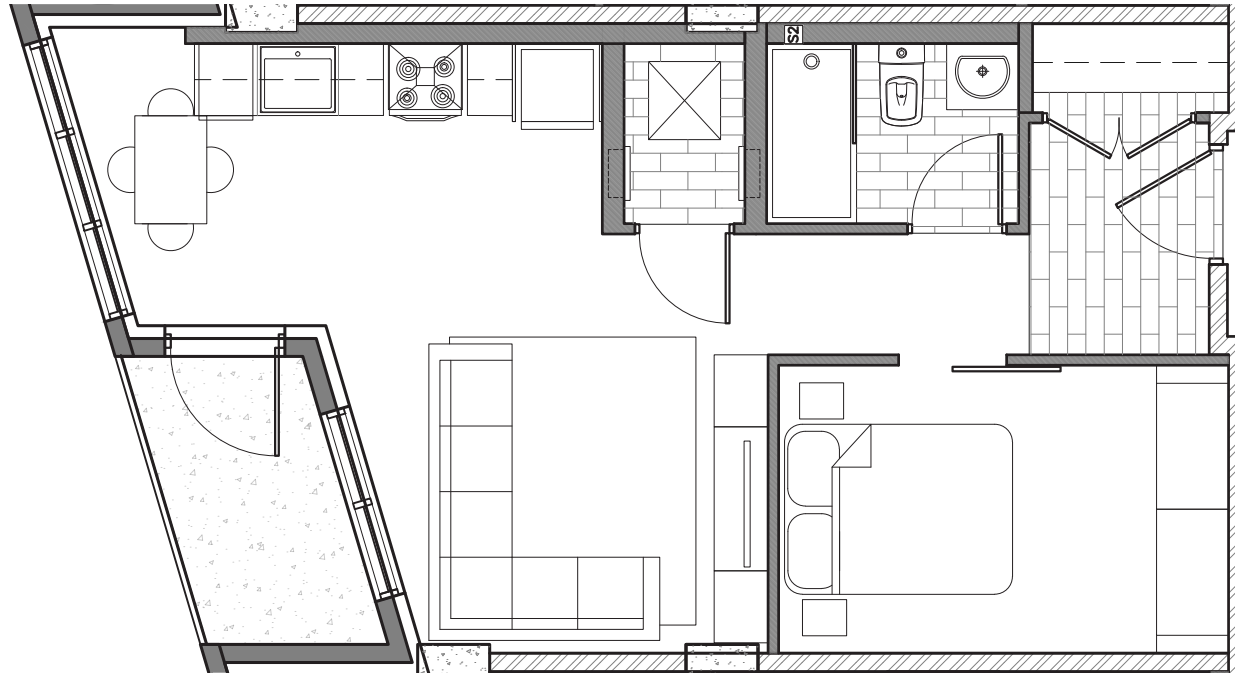
1 Bedroom - 1 Bathroom - 540 sq ft.

All dimensions are approximate and no responsibility is taken for any error, omission or misstatement. Size and specifications are subject to change without notice. This plan is for illustrative purposes only and should be used as such.

GRAFTON PARK

1537 Brunswick St Halifax, Nova Scotia

Units 207, 307, 407, 507



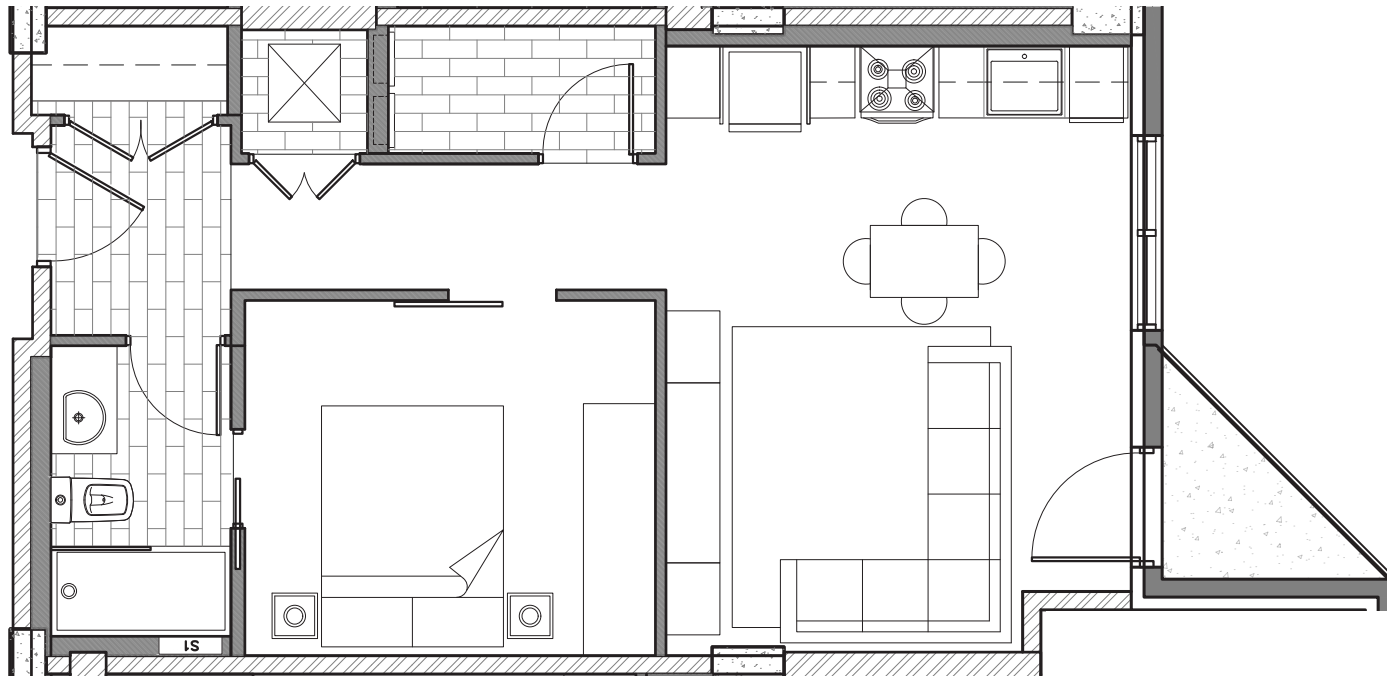
1 Bedroom - 1 Bathroom - 475 sq ft.

All dimensions are approximate and no responsibility is taken for any error, omission or misstatement. Size and specifications are subject to change without notice. This plan is for illustrative purposes only and should be used as such.

GRAFTON PARK

1537 Brunswick St Halifax, Nova Scotia

Units 208, 308, 408, 508



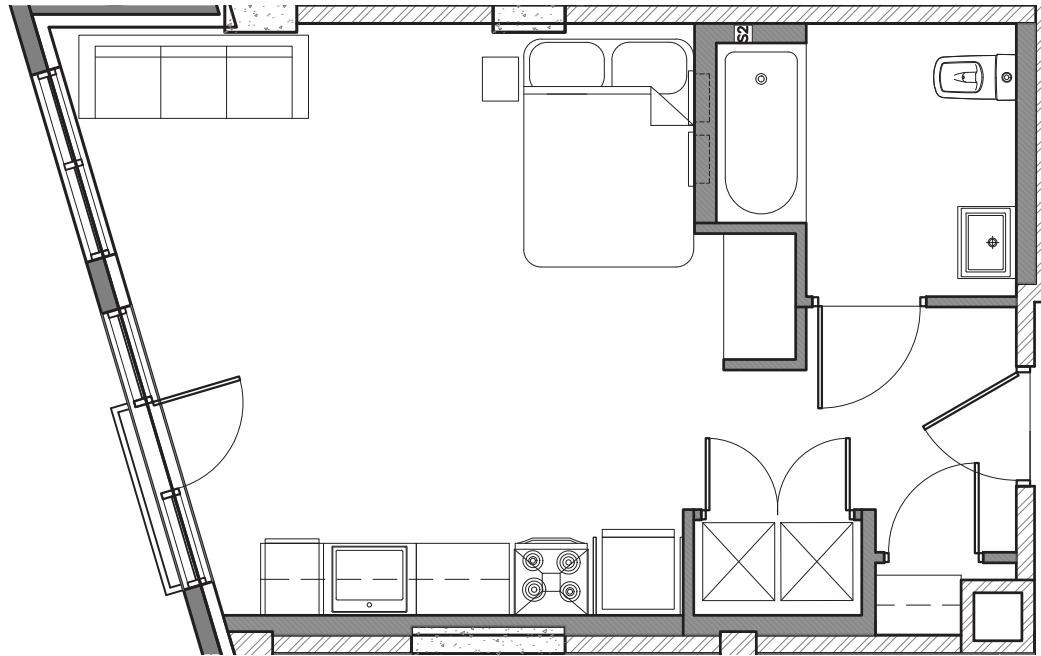
1 Bedroom - 1 Bathroom - 525 sq ft.

All dimensions are approximate and no responsibility is taken for any error, omission or misstatement. Size and specifications are subject to change without notice. This plan is for illustrative purposes only and should be used as such.

GRAFTON PARK

1537 Brunswick St Halifax, Nova Scotia

Units 209, 309, 409, 509



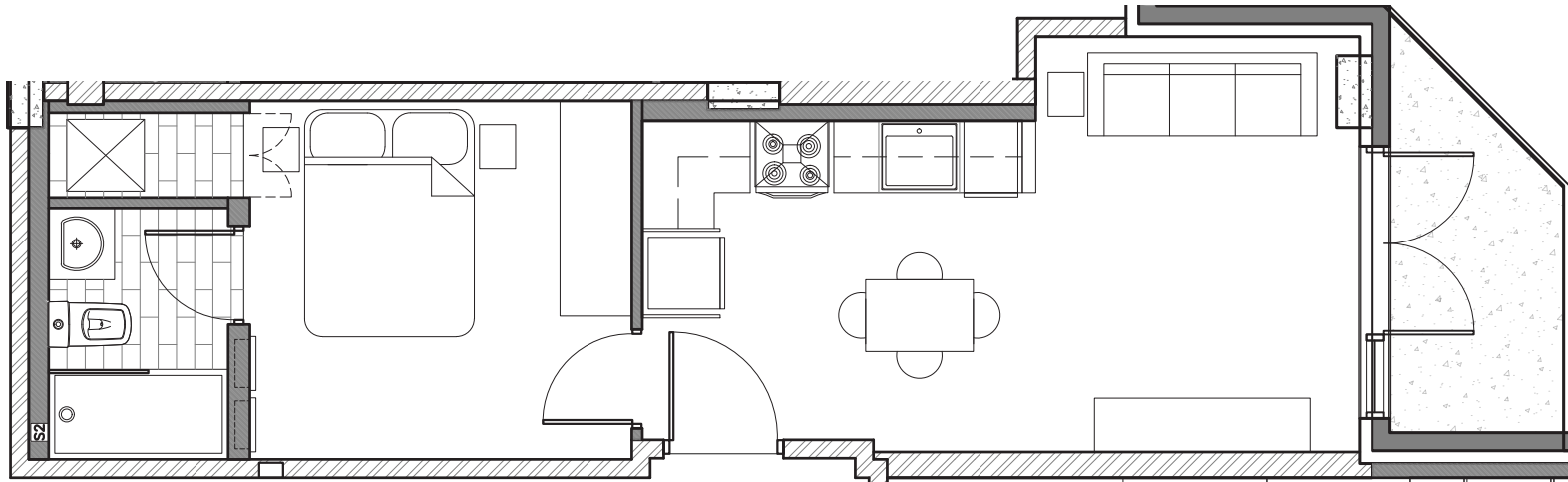
1 Bedroom - 1 Bathroom - 415 sq ft.

All dimensions are approximate and no responsibility is taken for any error, omission or misstatement. Size and specifications are subject to change without notice. This plan is for illustrative purposes only and should be used as such.

GRAFTON PARK

1537 Brunswick St Halifax, Nova Scotia

Units 210, 310, 410, 510



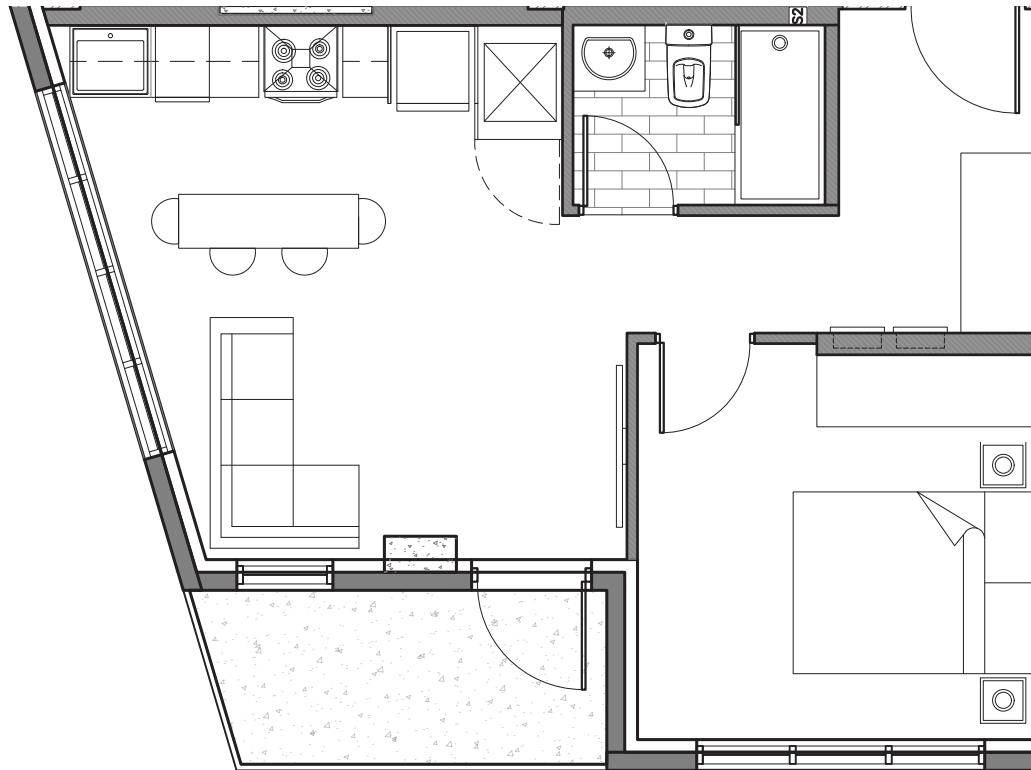
1 Bedroom - 1 Bathroom - 380 sq ft.

All dimensions are approximate and no responsibility is taken for any error, omission or misstatement. Size and specifications are subject to change without notice. This plan is for illustrative purposes only and should be used as such.

GRAFTON PARK

1537 Brunswick St Halifax, Nova Scotia

Units 211, 311, 411, 511



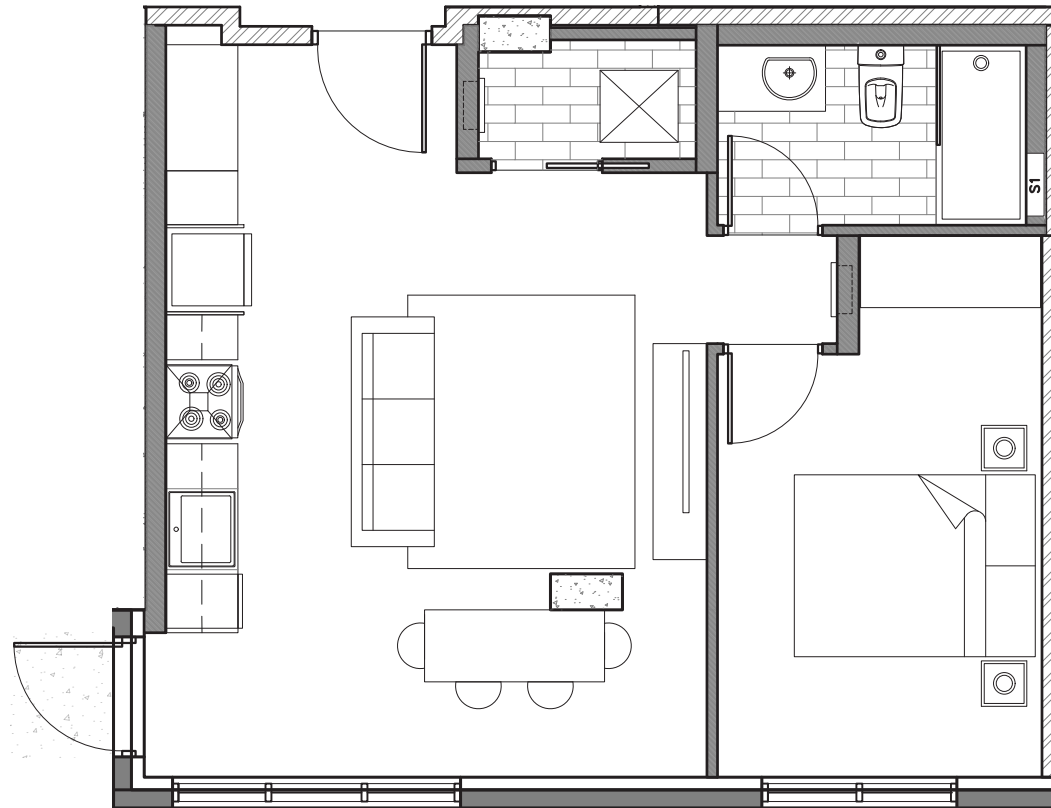
1 Bedroom - 1 Bathroom - 445 sq ft.

All dimensions are approximate and no responsibility is taken for any error, omission or misstatement. Size and specifications are subject to change without notice. This plan is for illustrative purposes only and should be used as such.

GRAFTON PARK

1537 Brunswick St Halifax, Nova Scotia

Units 212, 312, 412, 512



1 Bedroom - 1 Bathroom - 520 sq ft.

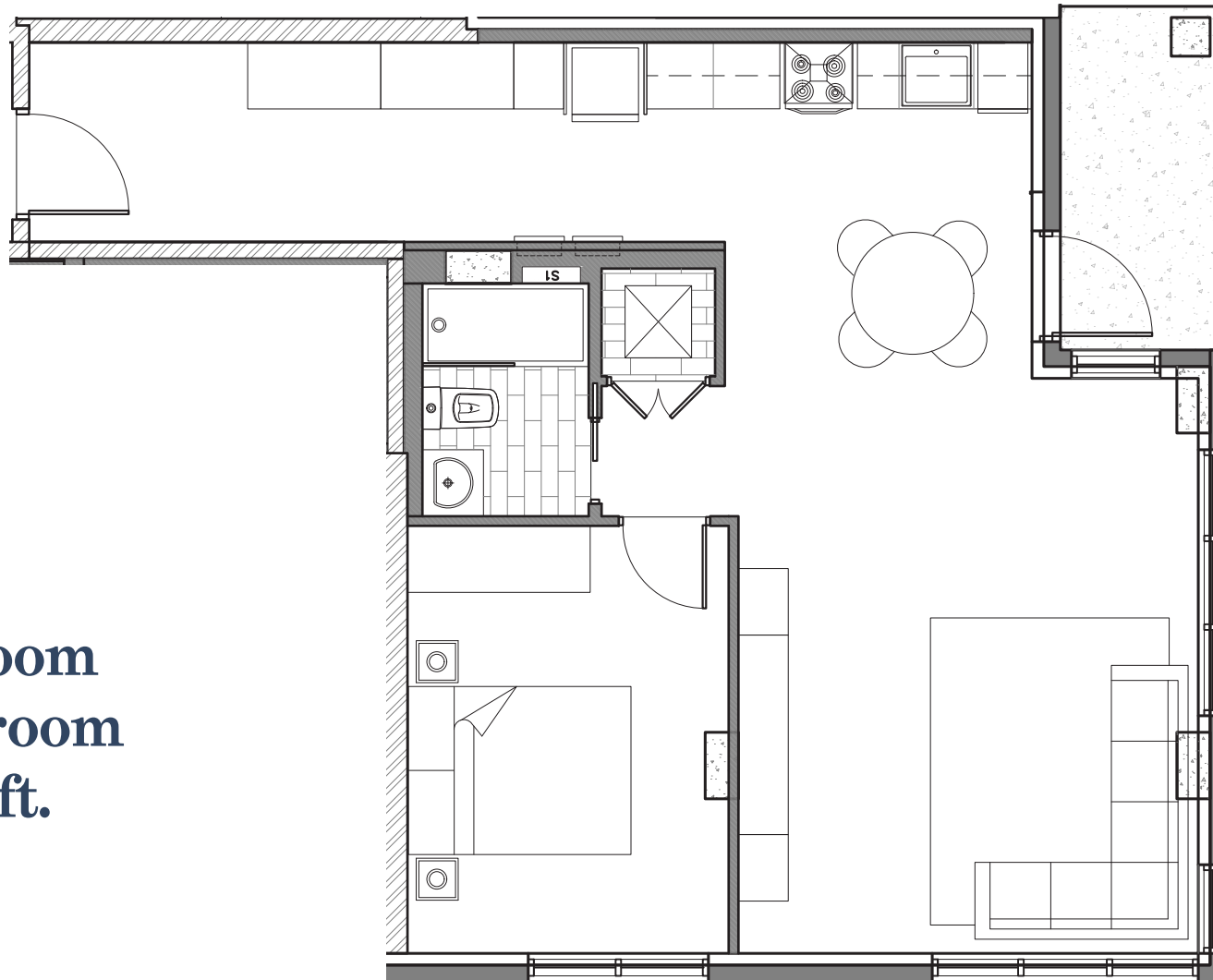
All dimensions are approximate and no responsibility is taken for any error, omission or misstatement. Size and specifications are subject to change without notice. This plan is for illustrative purposes only and should be used as such.

GRAFTON PARK

1537 Brunswick St Halifax, Nova Scotia

Units 213, 313, 413, 513

1 Bedroom
1 Bathroom
675 sq ft.

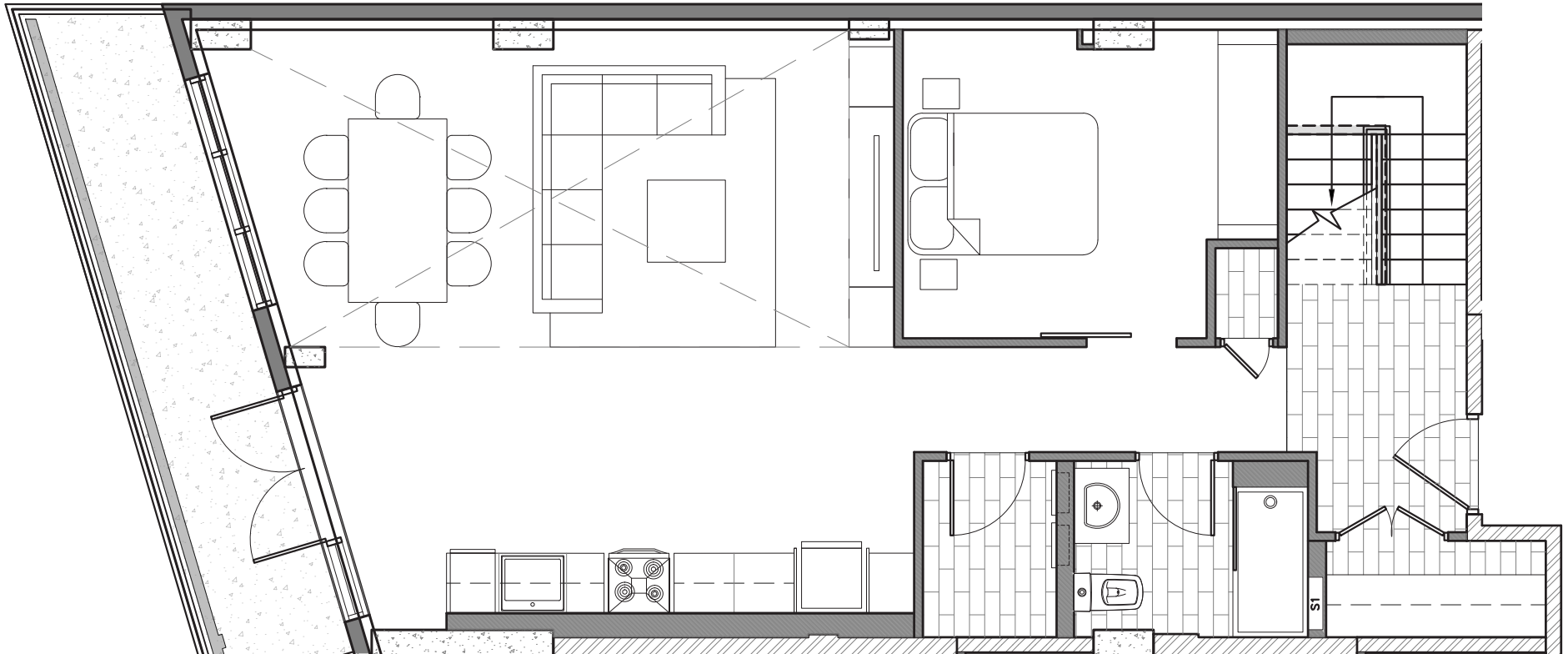


All dimensions are approximate and no responsibility is taken for any error, omission or misstatement.
Size and specifications are subject to change without notice. This plan is for illustrative purposes only and should be used as such.

GRAFTON PARK

1537 Brunswick St Halifax, Nova Scotia

Unit 601, 2-Storey Lower Floor



3 Bedroom - 3 Bathroom - 1,340 sq ft.

2-Storey Penthouse

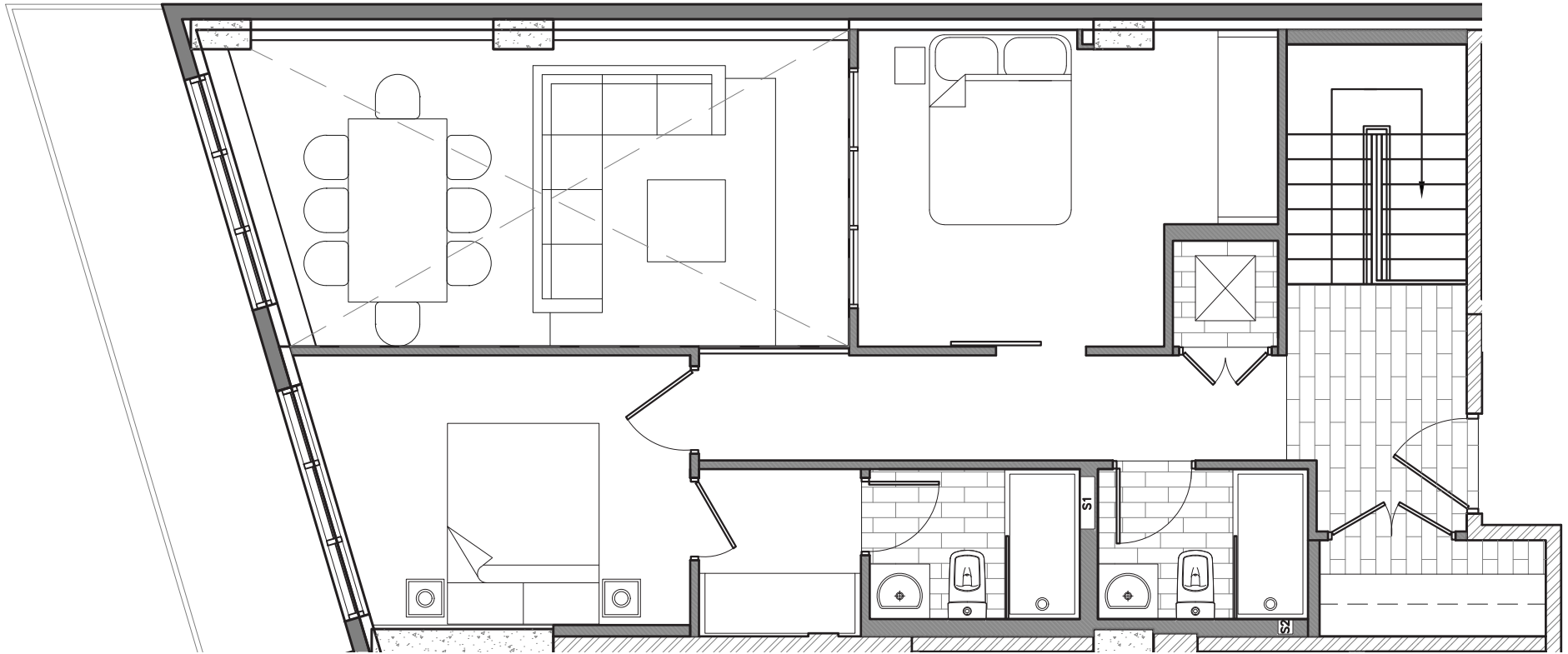
All dimensions are approximate and no responsibility is taken for any error, omission or misstatement.

Size and specifications are subject to change without notice. This plan is for illustrative purposes only and should be used as such.

GRAFTON PARK

1537 Brunswick St Halifax, Nova Scotia

Unit 601, 2-Storey Upper Floor



3 Bedroom - 3 Bathroom - 1,340 sq ft.

2-Storey Penthouse

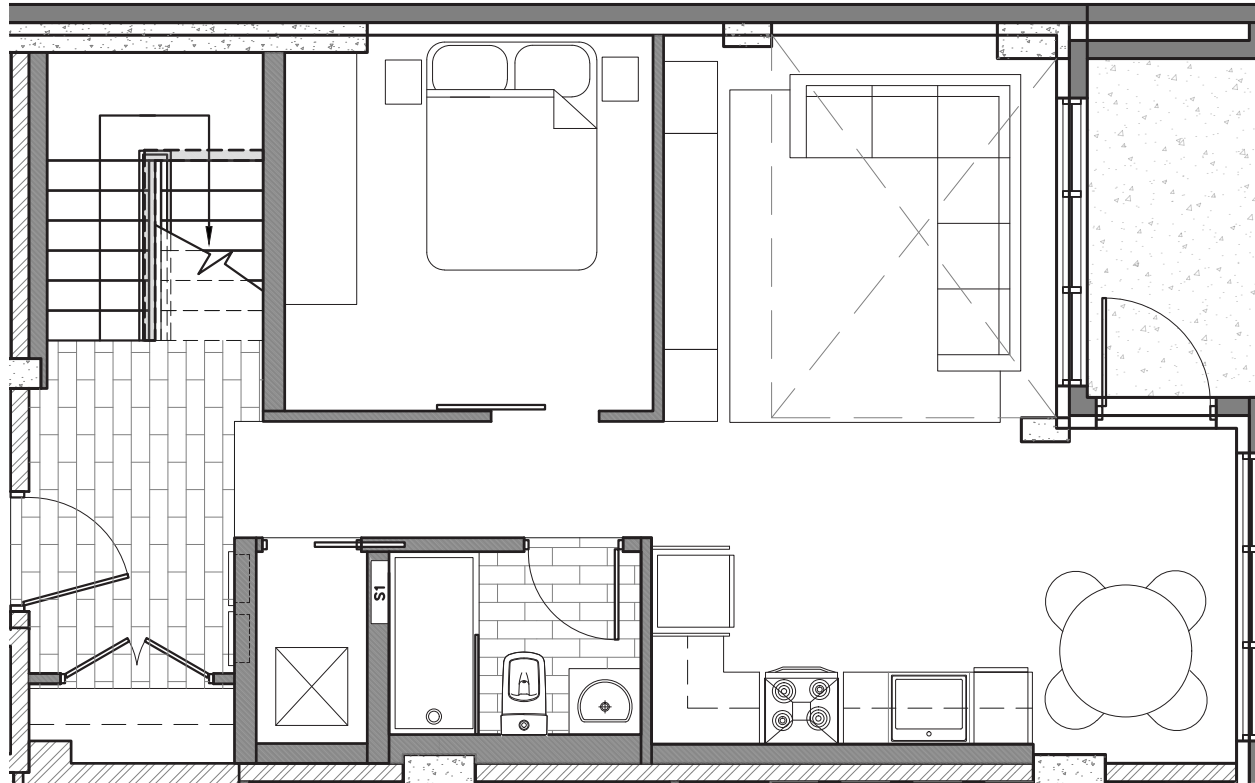
All dimensions are approximate and no responsibility is taken for any error, omission or misstatement.

Size and specifications are subject to change without notice. This plan is for illustrative purposes only and should be used as such.

GRAFTON PARK

1537 Brunswick St Halifax, Nova Scotia

Unit 602, 2-Storey Lower Floor



3 Bedroom - 3 Bathroom - 1,100 sq ft.

2-Storey Penthouse

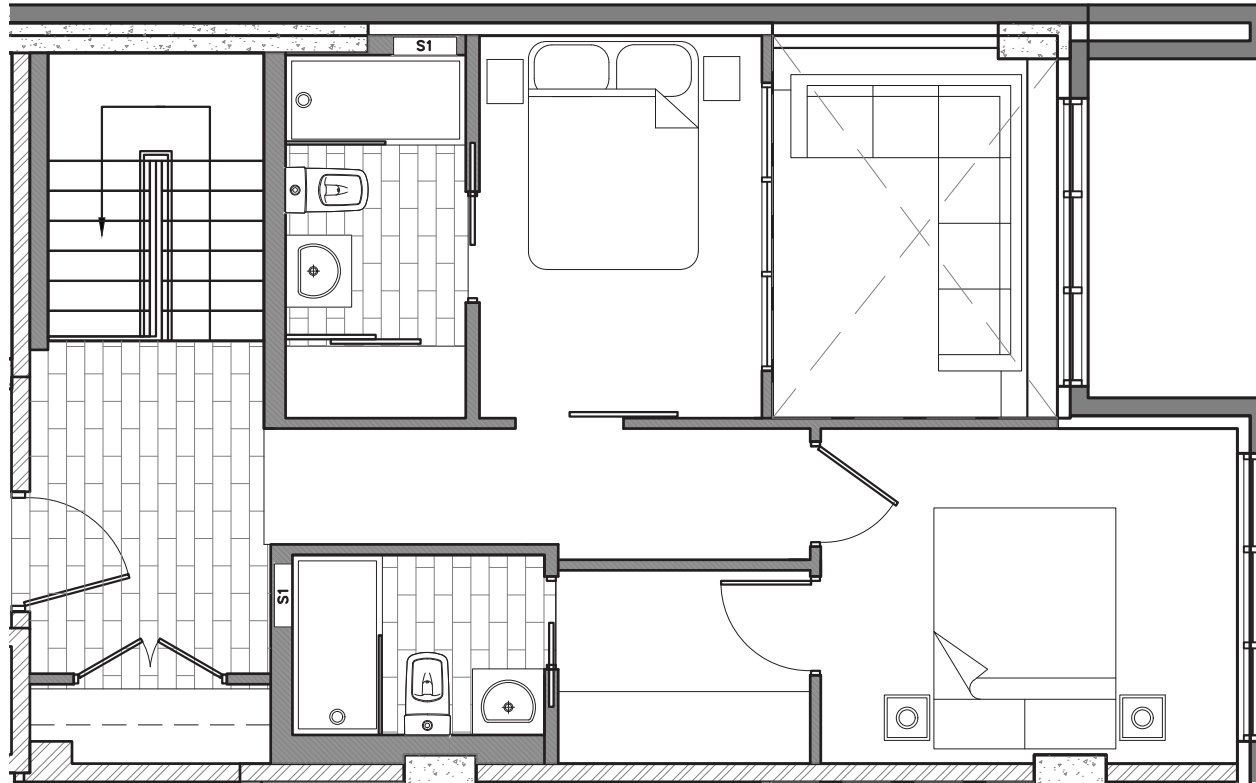
All dimensions are approximate and no responsibility is taken for any error, omission or misstatement.

Size and specifications are subject to change without notice. This plan is for illustrative purposes only and should be used as such.

GRAFTON PARK

1537 Brunswick St Halifax, Nova Scotia

Unit 602, 2-Storey Upper Floor



3 Bedroom - 3 Bathroom - 1,100 sq ft.

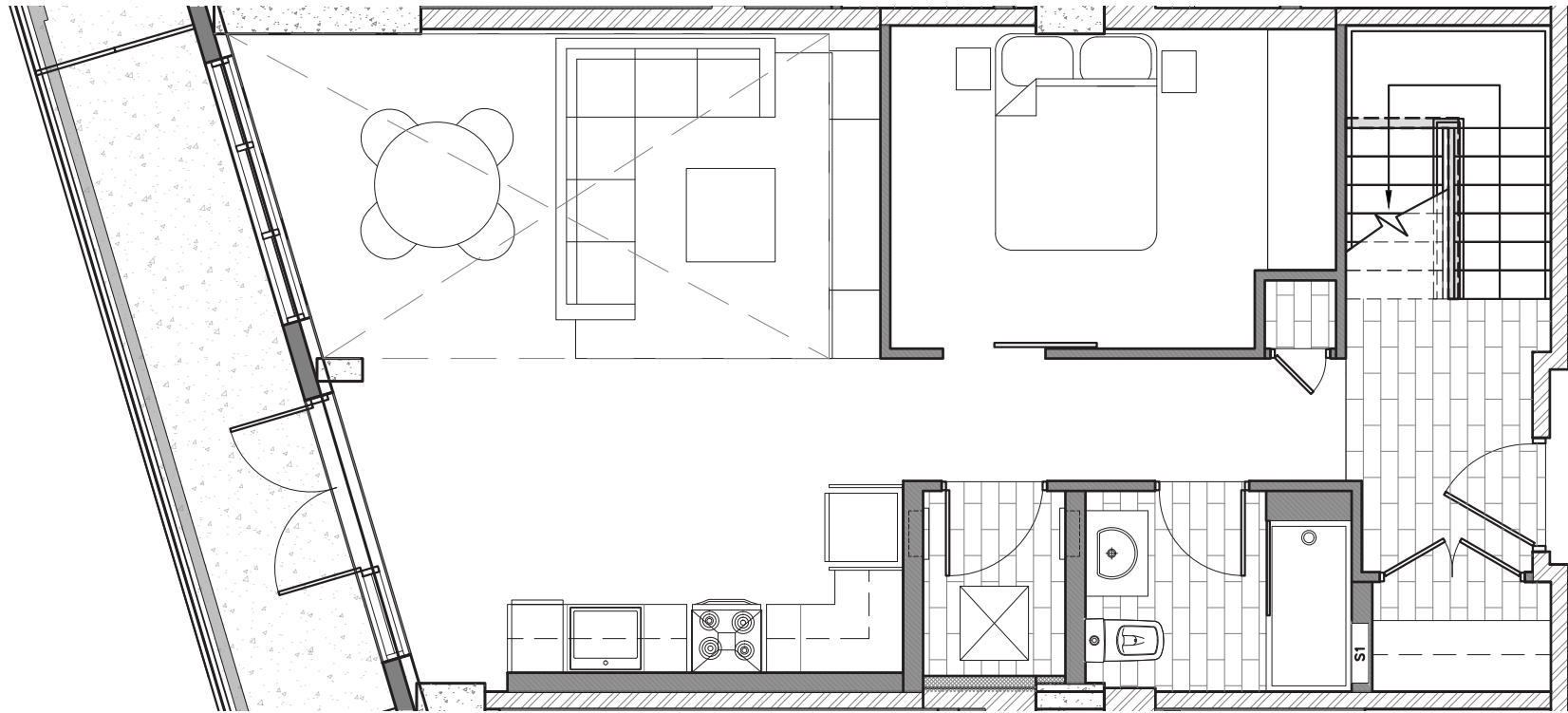
2-Storey Penthouse

All dimensions are approximate and no responsibility is taken for any error, omission or misstatement. Size and specifications are subject to change without notice. This plan is for illustrative purposes only and should be used as such.

GRAFTON PARK

1537 Brunswick St Halifax, Nova Scotia

Unit 603, 2-Storey Lower Floor



3 Bedroom - 2 Bathroom - 1,185 sq ft.

2-Storey Penthouse

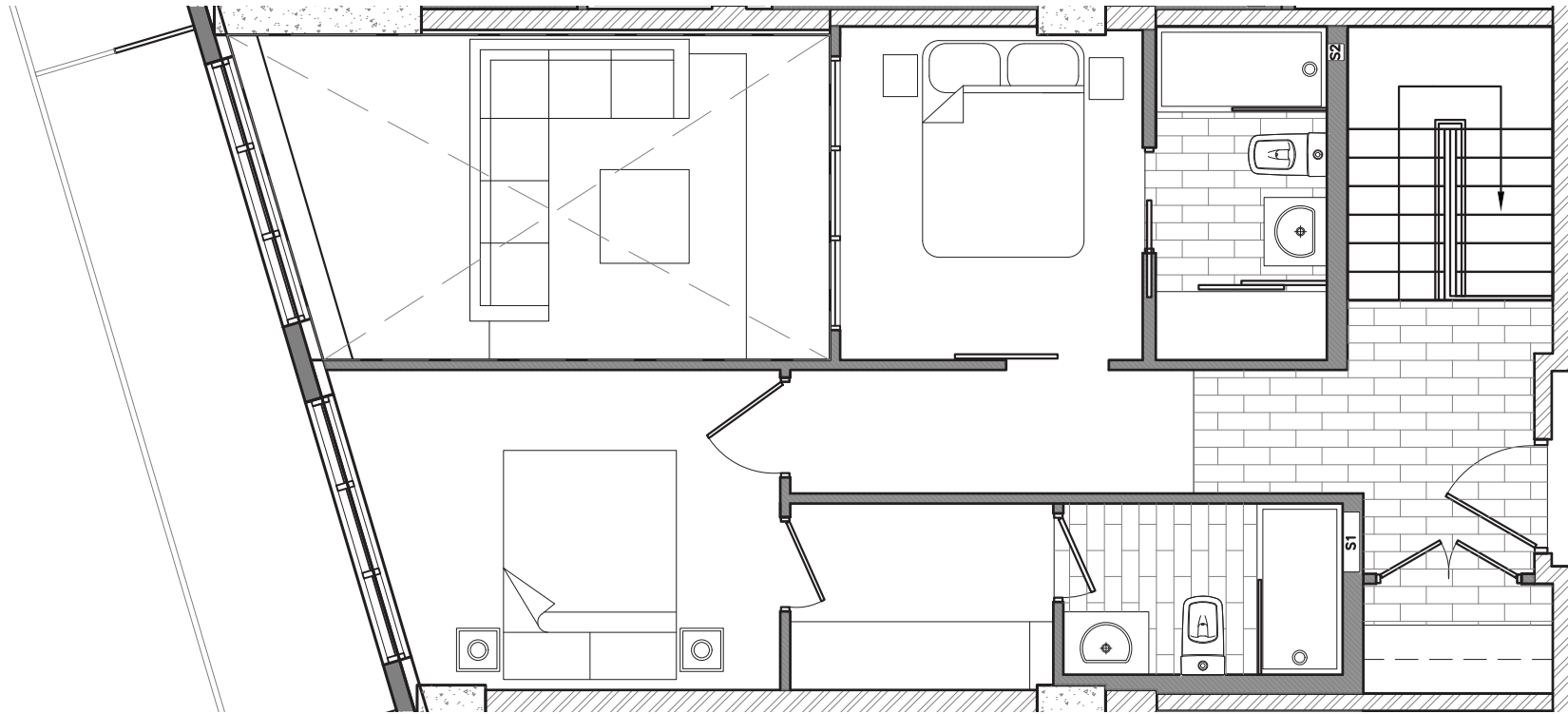
All dimensions are approximate and no responsibility is taken for any error, omission or misstatement.

Size and specifications are subject to change without notice. This plan is for illustrative purposes only and should be used as such.

GRAFTON PARK

1537 Brunswick St Halifax, Nova Scotia

Unit 603, 2-Storey Upper Floor



3 Bedroom - 2 Bathroom - 1,185 sq ft.

2-Storey Penthouse

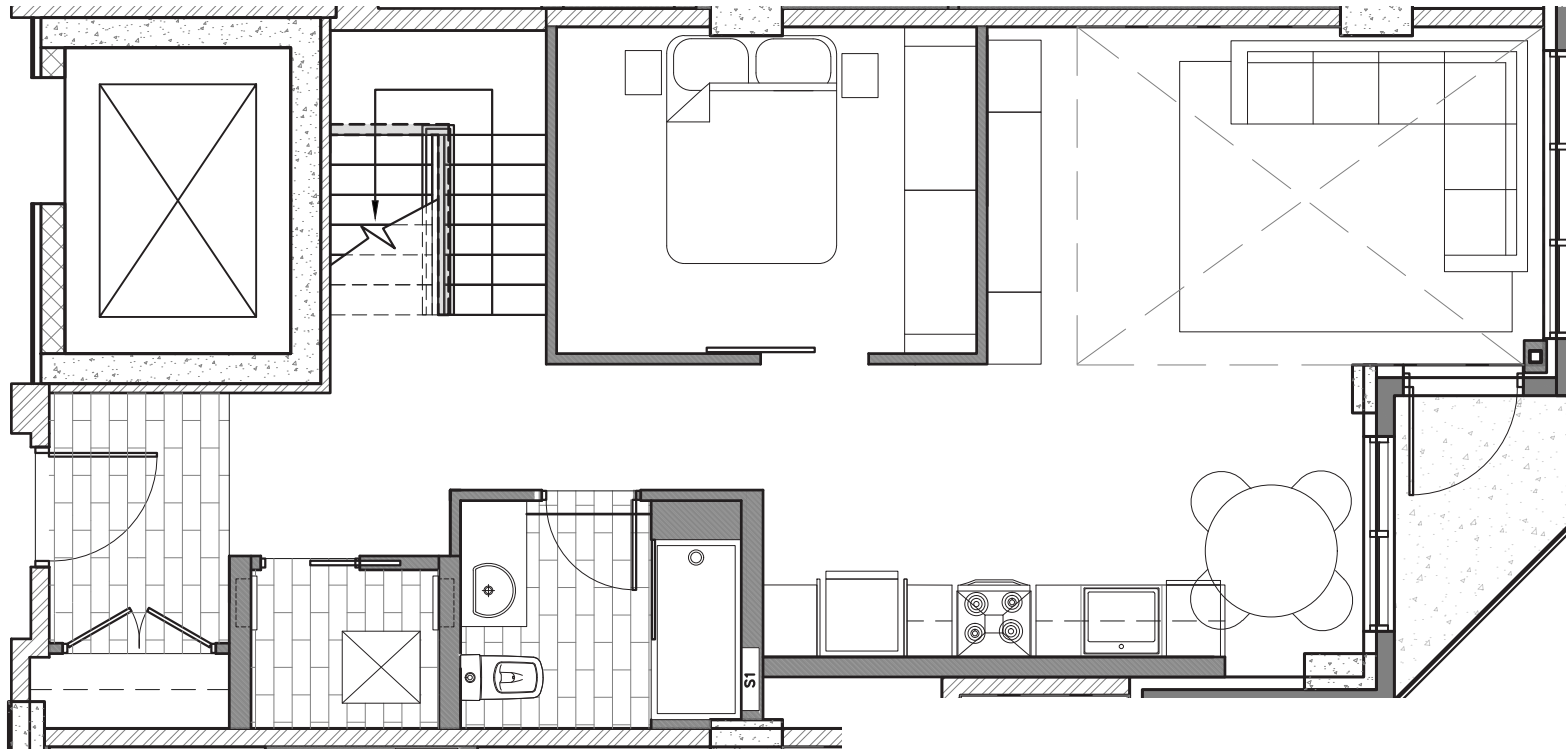
All dimensions are approximate and no responsibility is taken for any error, omission or misstatement.

Size and specifications are subject to change without notice. This plan is for illustrative purposes only and should be used as such.

GRAFTON PARK

1537 Brunswick St Halifax, Nova Scotia

Unit 604, 2-Storey Lower Floor



3 Bedroom - 3 Bathroom - 1,150 sq ft.

2-Storey Penthouse

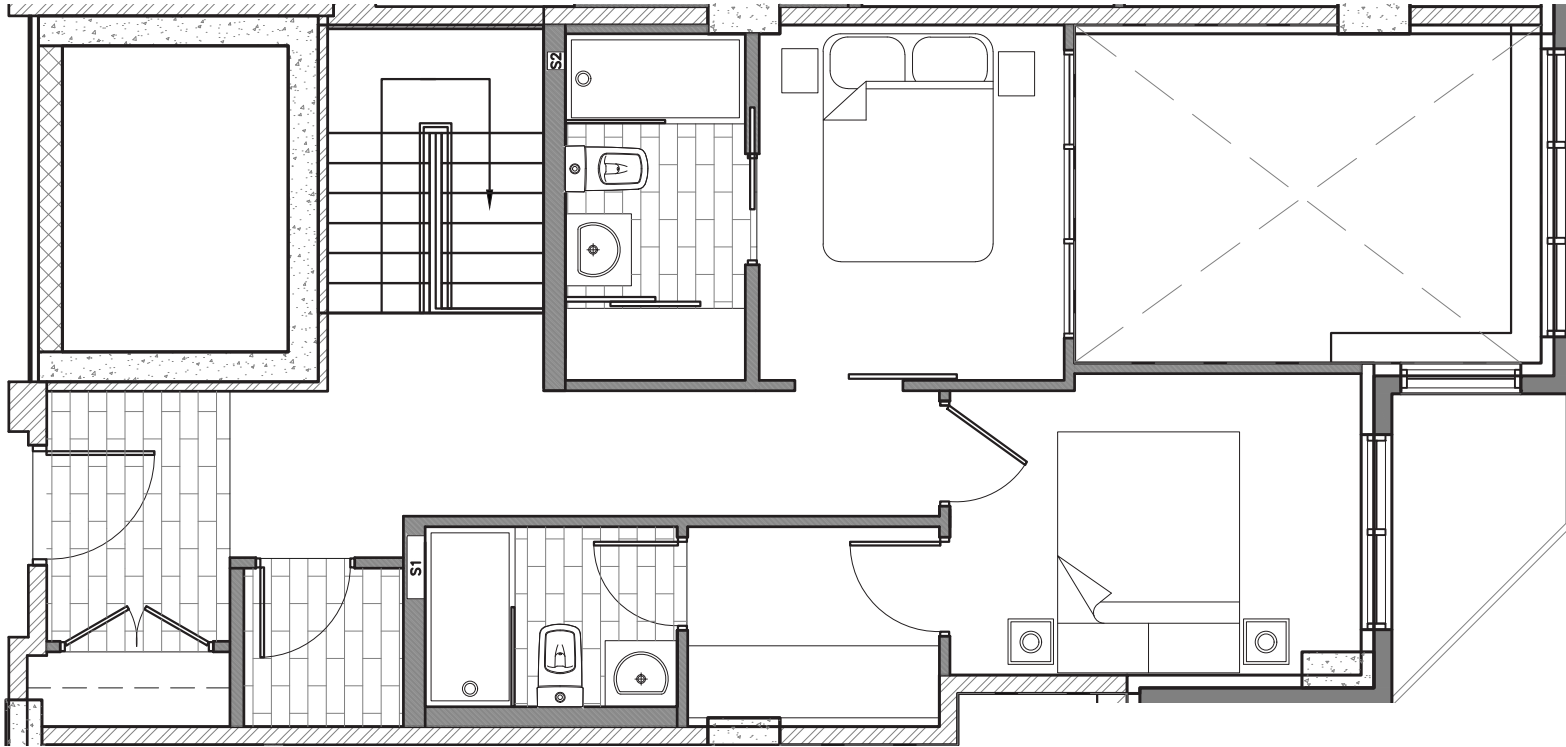
All dimensions are approximate and no responsibility is taken for any error, omission or misstatement.

Size and specifications are subject to change without notice. This plan is for illustrative purposes only and should be used as such.

GRAFTON PARK

1537 Brunswick St Halifax, Nova Scotia

Unit 604, 2-Storey Upper Floor



3 Bedroom - 3 Bathroom - 1,150 sq ft.

2-Storey Penthouse

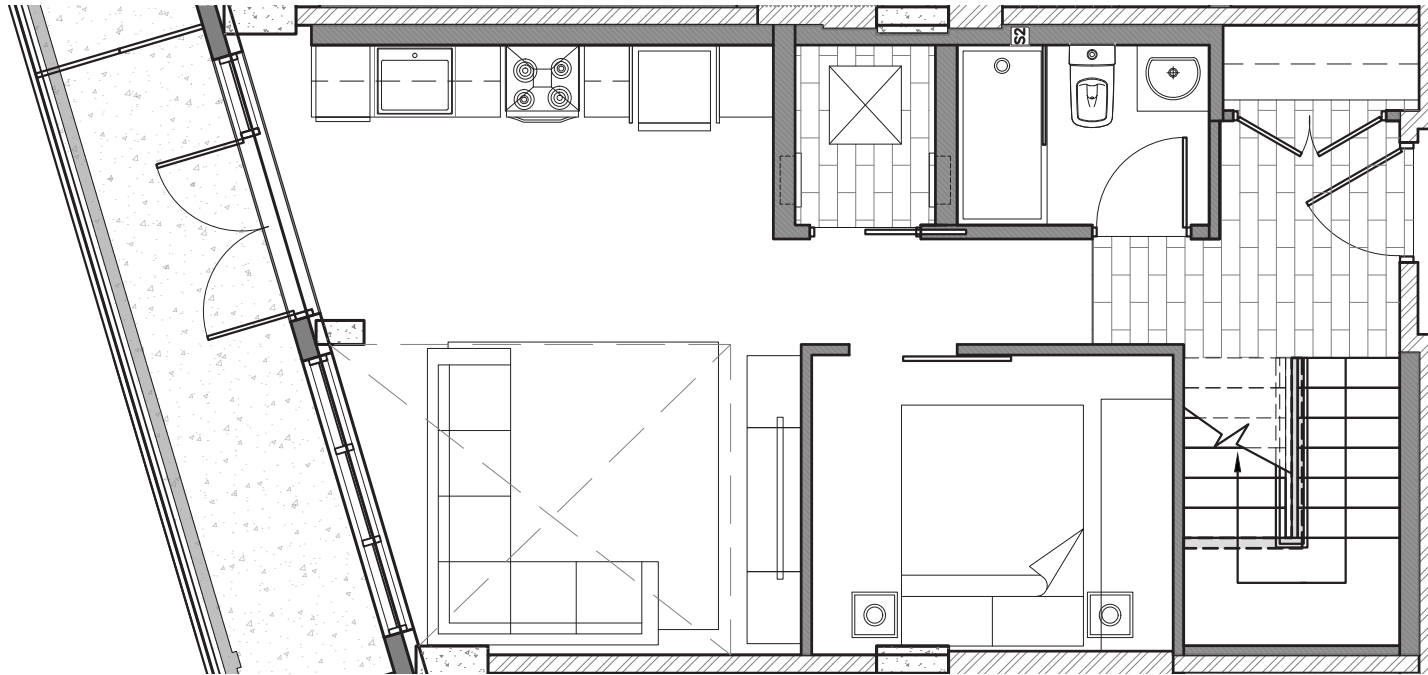
All dimensions are approximate and no responsibility is taken for any error, omission or misstatement.

Size and specifications are subject to change without notice. This plan is for illustrative purposes only and should be used as such.

GRAFTON PARK

1537 Brunswick St Halifax, Nova Scotia

Unit 605, 2-Storey Lower Floor



3 Bedroom - 2 Bathroom - 915 sq ft.

2-Storey Penthouse

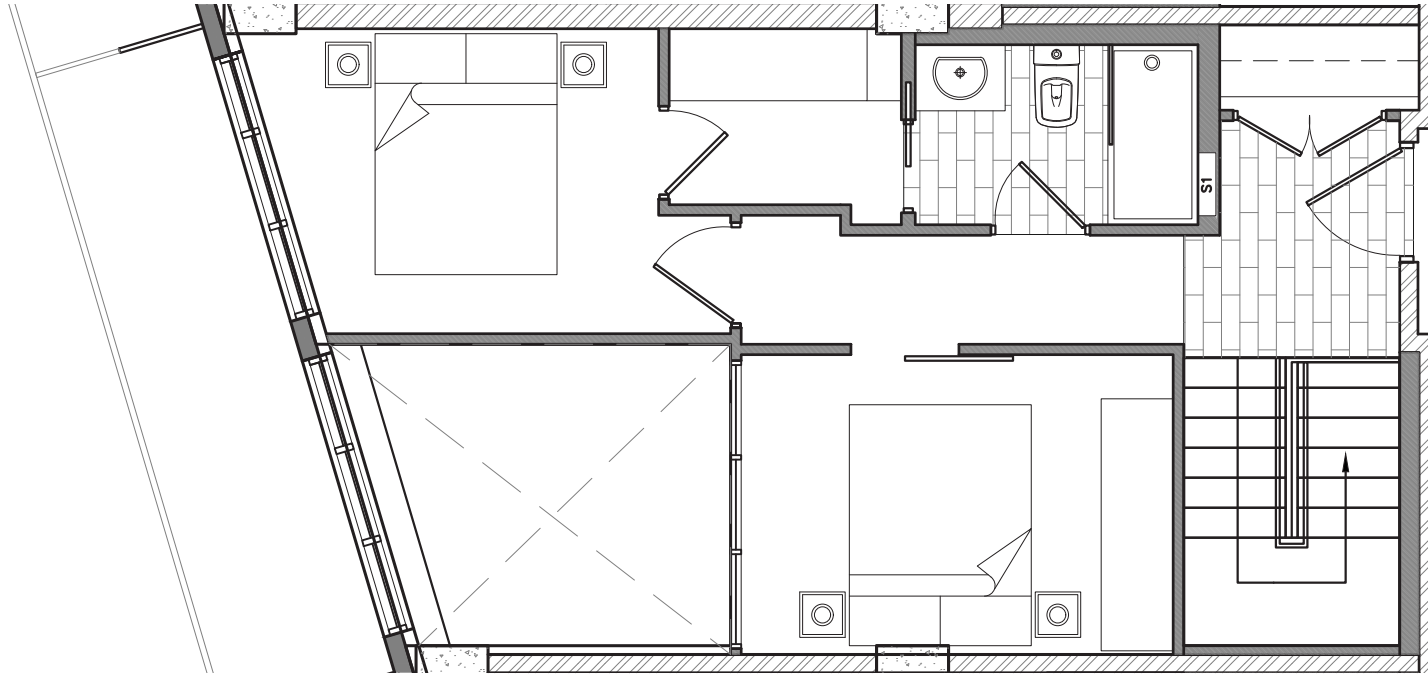
All dimensions are approximate and no responsibility is taken for any error, omission or misstatement.

Size and specifications are subject to change without notice. This plan is for illustrative purposes only and should be used as such.

GRAFTON PARK

1537 Brunswick St Halifax, Nova Scotia

Unit 605, 2-Storey Upper Floor



3 Bedroom - 2 Bathroom - 915 sq ft.

2-Storey Penthouse

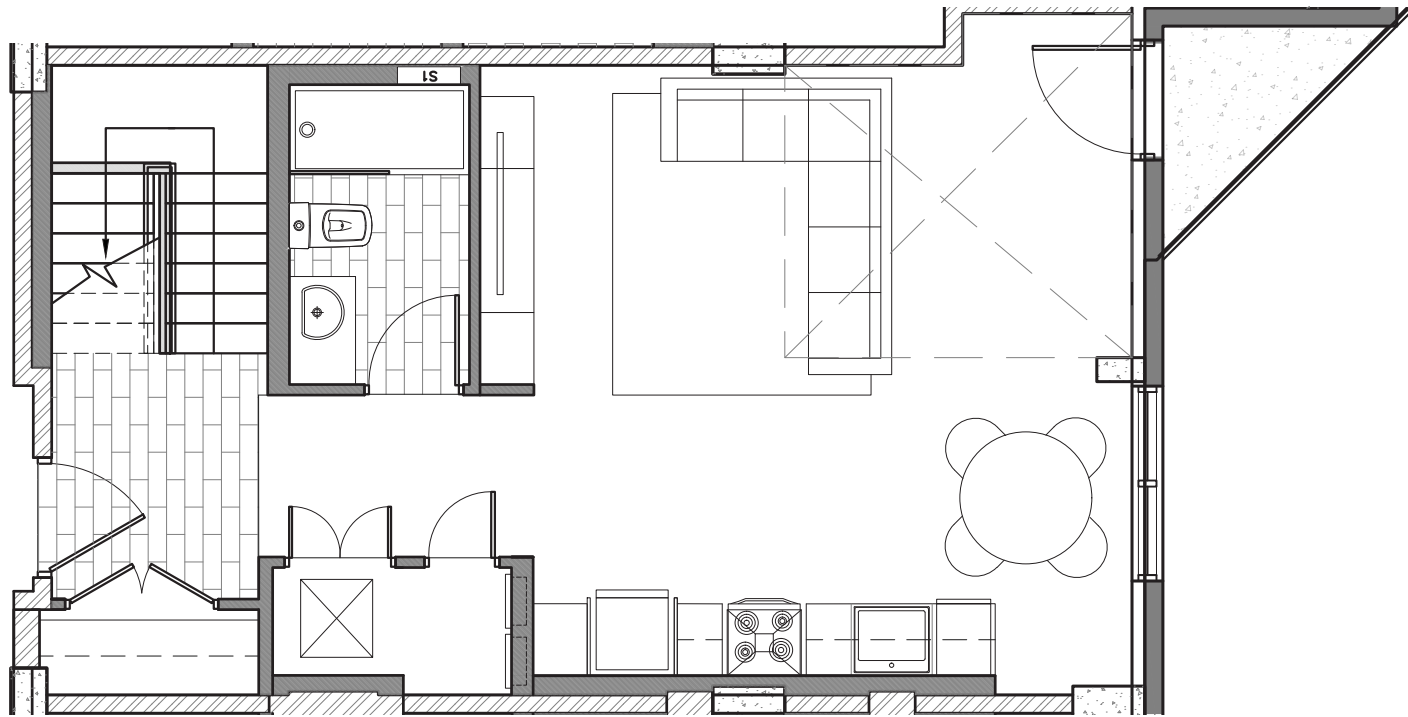
All dimensions are approximate and no responsibility is taken for any error, omission or misstatement.

Size and specifications are subject to change without notice. This plan is for illustrative purposes only and should be used as such.

GRAFTON PARK

1537 Brunswick St Halifax, Nova Scotia

Unit 606, 2-Storey Lower Floor



2 Bedroom - 2 Bathroom - 935 sq ft.

2-Storey Penthouse

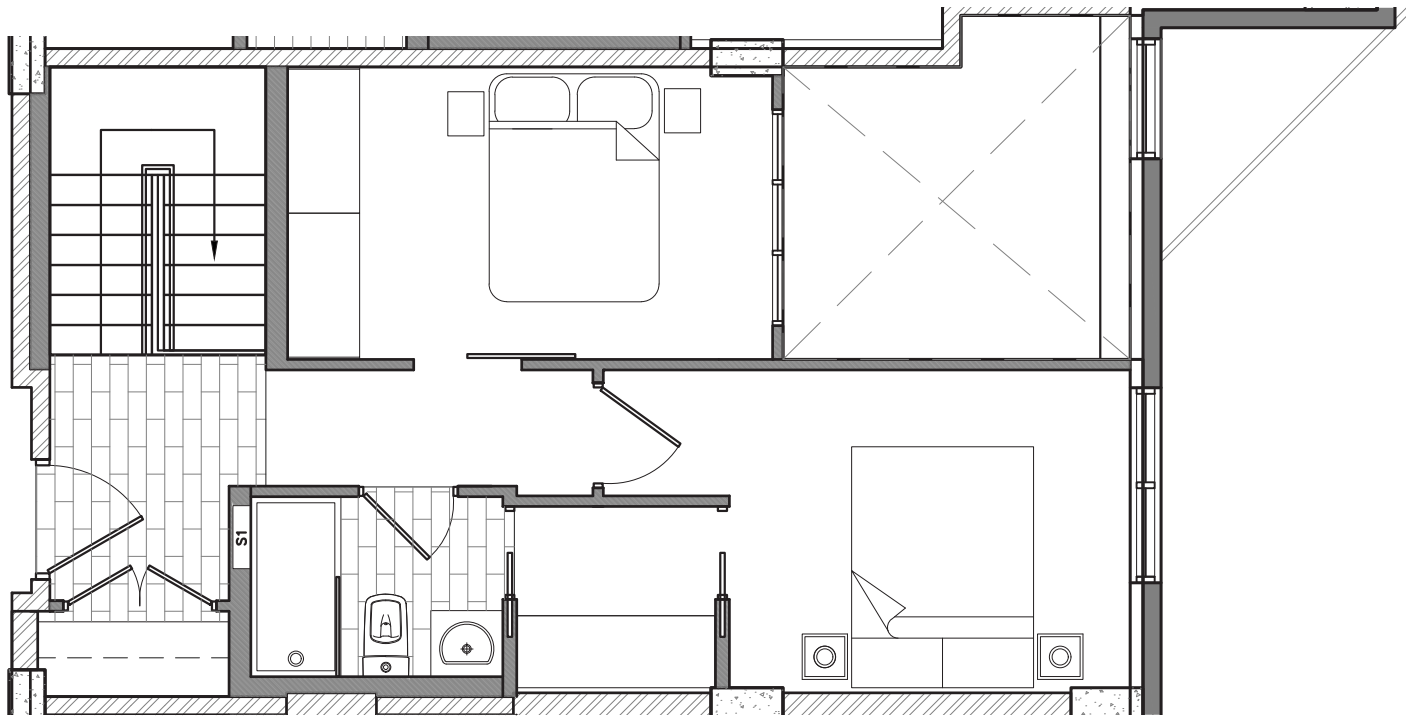
All dimensions are approximate and no responsibility is taken for any error, omission or misstatement.

Size and specifications are subject to change without notice. This plan is for illustrative purposes only and should be used as such.

GRAFTON PARK

1537 Brunswick St Halifax, Nova Scotia

Unit 606, 2-Storey Upper Floor



2 Bedroom - 2 Bathroom - 935 sq ft.

2-Storey Penthouse

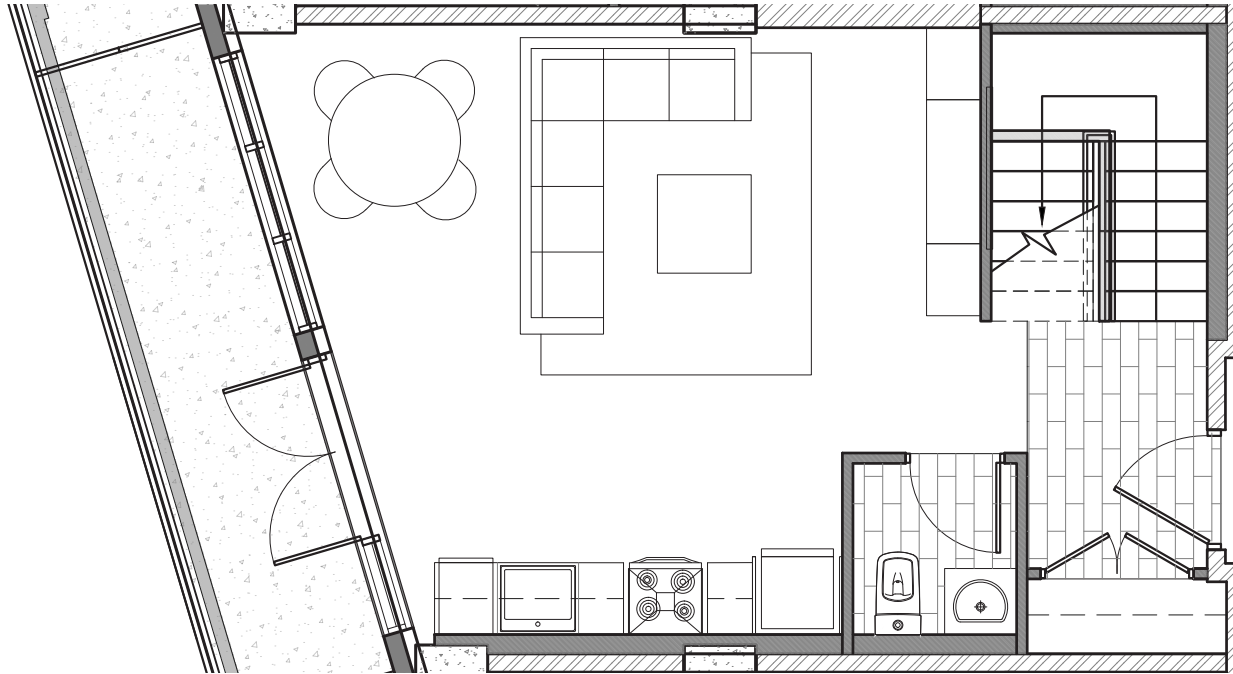
All dimensions are approximate and no responsibility is taken for any error, omission or misstatement.

Size and specifications are subject to change without notice. This plan is for illustrative purposes only and should be used as such.

GRAFTON PARK

1537 Brunswick St Halifax, Nova Scotia

Unit 607, 2-Storey Lower Floor



2 Bedroom - 2 Bathroom - 810 sq ft.

2-Storey Penthouse

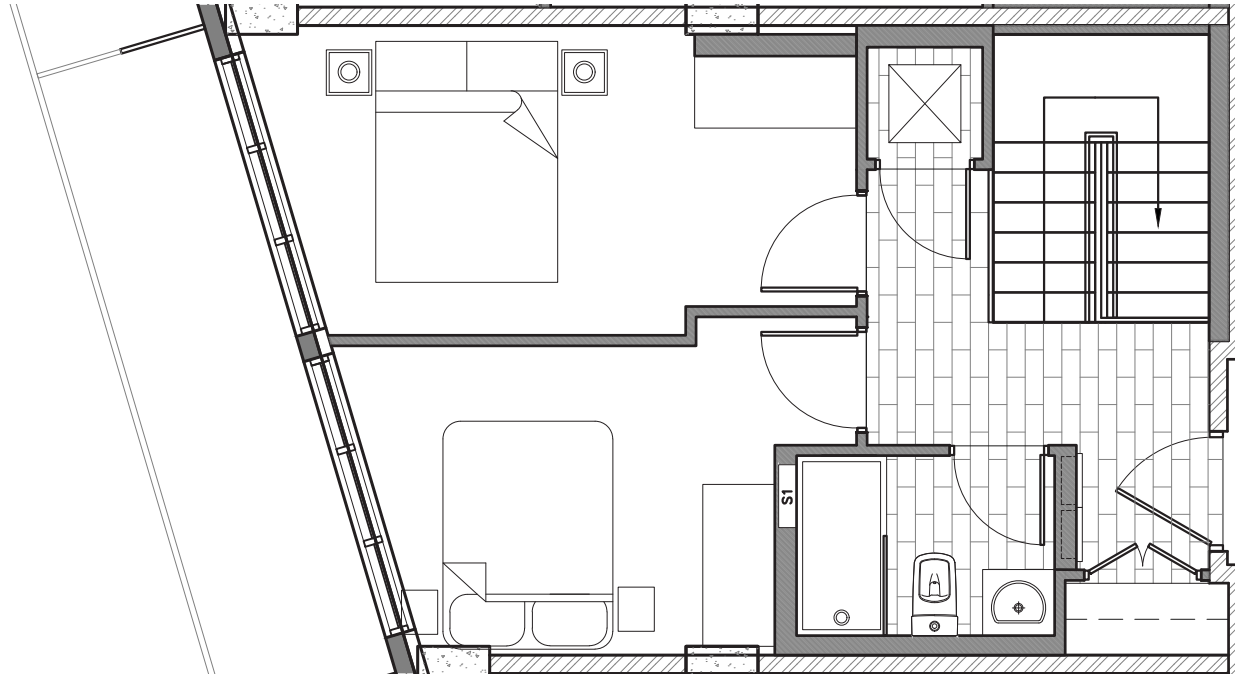
All dimensions are approximate and no responsibility is taken for any error, omission or misstatement.

Size and specifications are subject to change without notice. This plan is for illustrative purposes only and should be used as such.

GRAFTON PARK

1537 Brunswick St Halifax, Nova Scotia

Unit 607, 2-Storey Upper Floor



2 Bedroom - 2 Bathroom - 810 sq ft.

2-Storey Penthouse

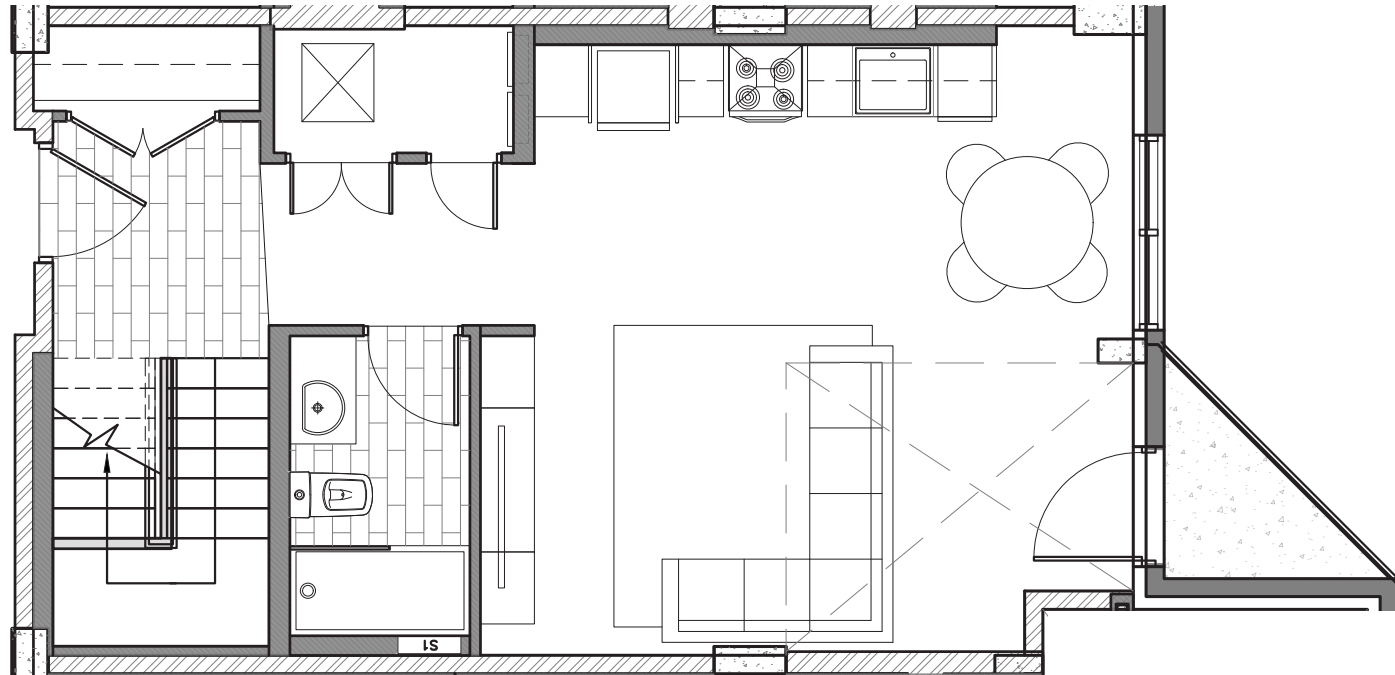
All dimensions are approximate and no responsibility is taken for any error, omission or misstatement.

Size and specifications are subject to change without notice. This plan is for illustrative purposes only and should be used as such.

GRAFTON PARK

1537 Brunswick St Halifax, Nova Scotia

Unit 608, 2-Storey Lower Floor



2 Bedroom - 2 Bathroom - 925 sq ft.

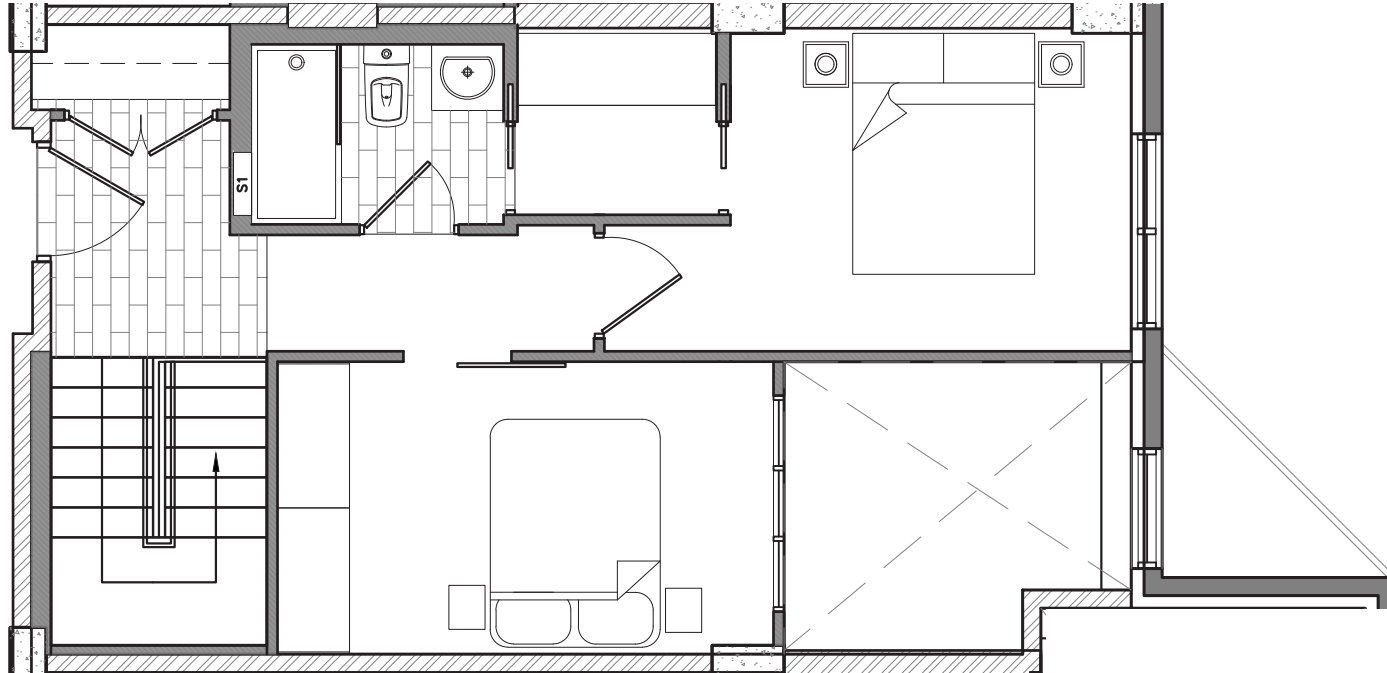
2-Storey Penthouse

All dimensions are approximate and no responsibility is taken for any error, omission or misstatement. Size and specifications are subject to change without notice. This plan is for illustrative purposes only and should be used as such.

GRAFTON PARK

1537 Brunswick St Halifax, Nova Scotia

Unit 608, 2-Storey Upper Floor



2 Bedroom - 2 Bathroom - 925 sq ft.

2-Storey Penthouse

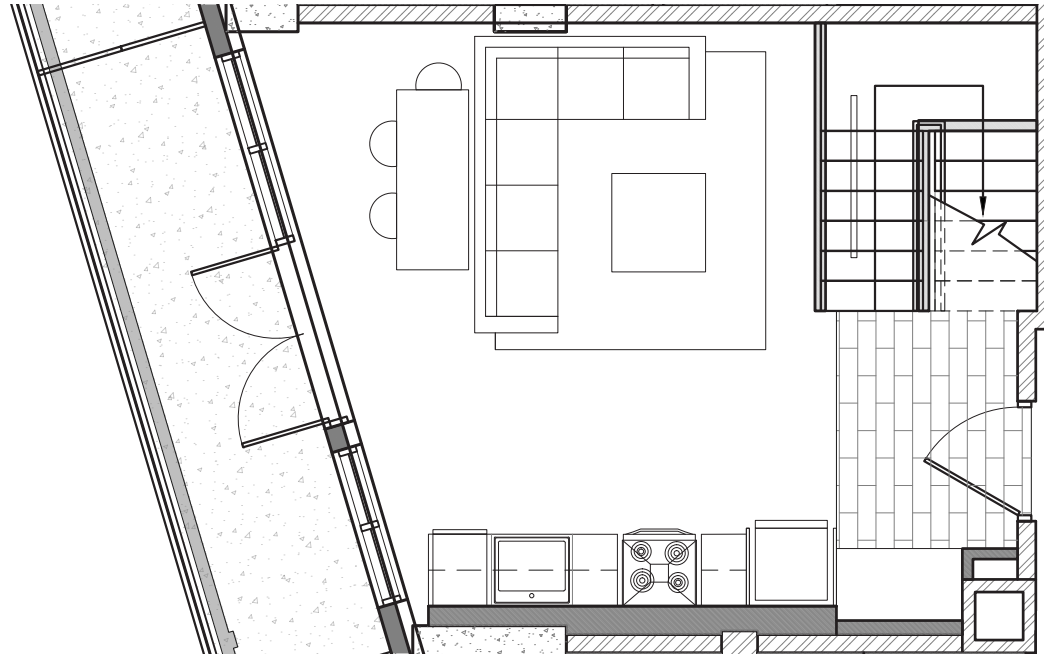
All dimensions are approximate and no responsibility is taken for any error, omission or misstatement.

Size and specifications are subject to change without notice. This plan is for illustrative purposes only and should be used as such.

GRAFTON PARK

1537 Brunswick St Halifax, Nova Scotia

Unit 609, 2-Storey Lower Floor



1 Bedroom - 1 Bathroom - 605 sq ft.

2-Storey Penthouse

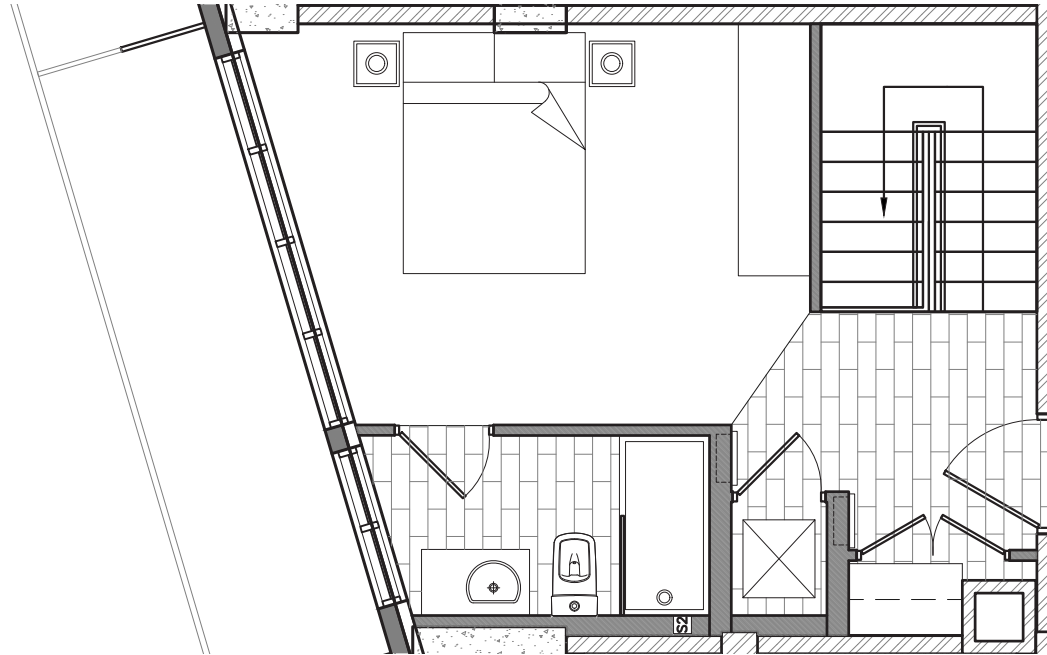
All dimensions are approximate and no responsibility is taken for any error, omission or misstatement.

Size and specifications are subject to change without notice. This plan is for illustrative purposes only and should be used as such.

GRAFTON PARK

1537 Brunswick St Halifax, Nova Scotia

Unit 609, 2-Storey Upper Floor



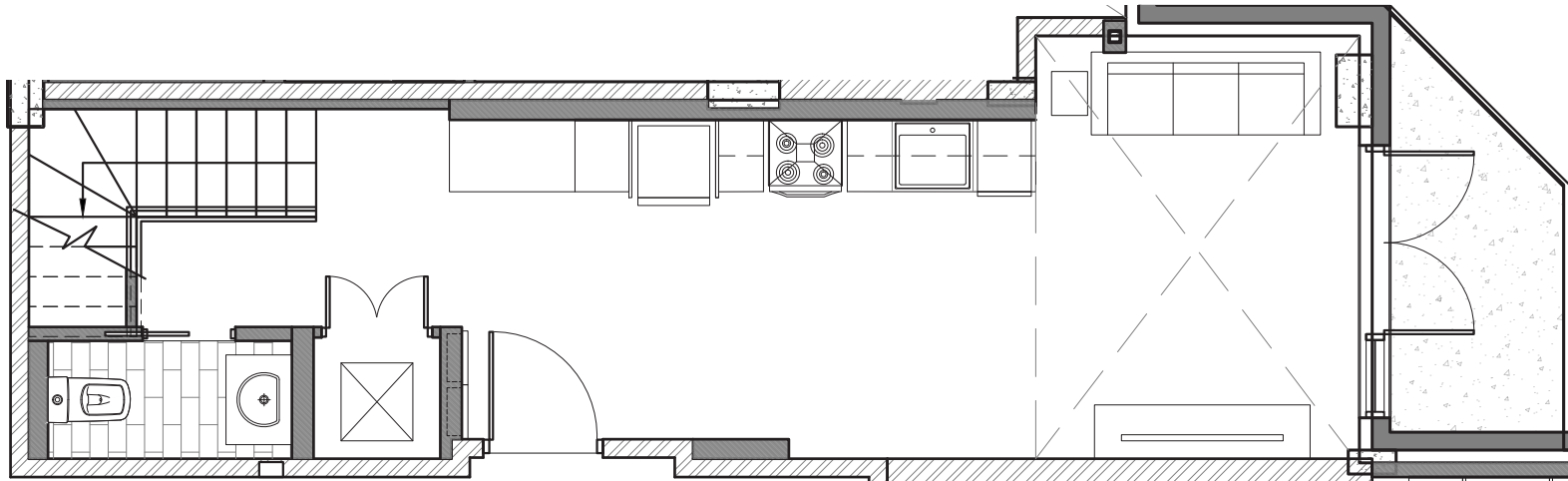
1 Bedroom - 1 Bathroom - 605 sq ft.
2-Storey Penthouse

All dimensions are approximate and no responsibility is taken for any error, omission or misstatement.
Size and specifications are subject to change without notice. This plan is for illustrative purposes only and should be used as such.

GRAFTON PARK

1537 Brunswick St Halifax, Nova Scotia

Unit 610, 2-Storey Lower Floor



1 Bedroom - 2 Bathroom - 615 sq ft.

2-Storey Penthouse

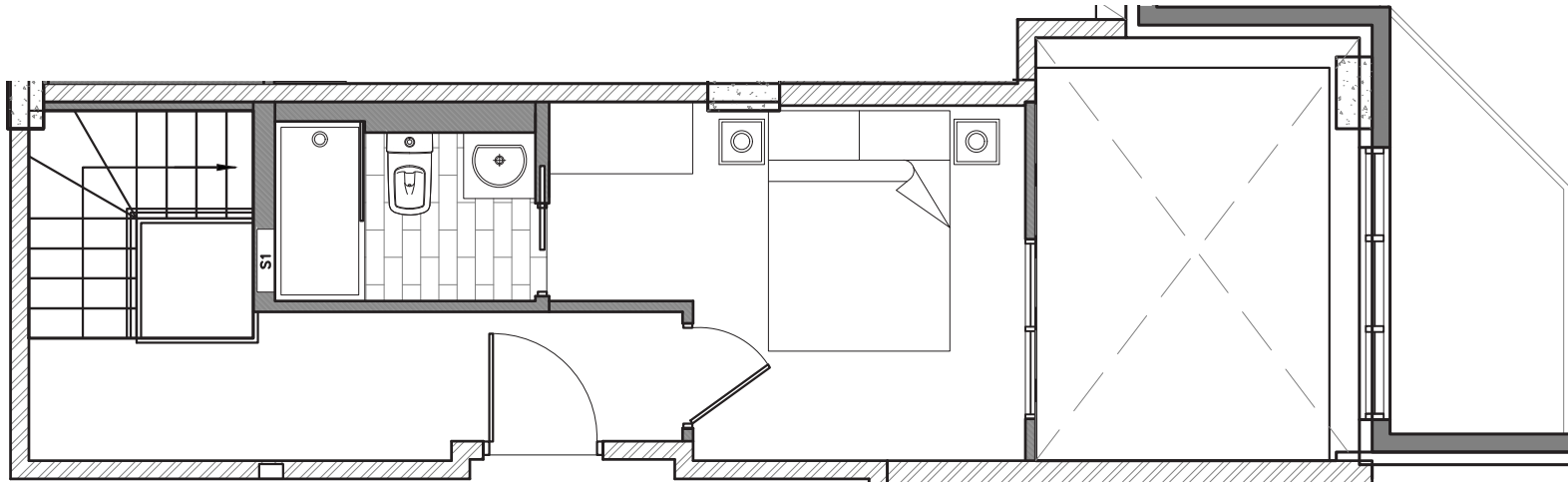
All dimensions are approximate and no responsibility is taken for any error, omission or misstatement.

Size and specifications are subject to change without notice. This plan is for illustrative purposes only and should be used as such.

GRAFTON PARK

1537 Brunswick St Halifax, Nova Scotia

Unit 610, 2-Storey Upper Floor



1 Bedroom - 2 Bathroom - 615 sq ft.

2-Storey Penthouse

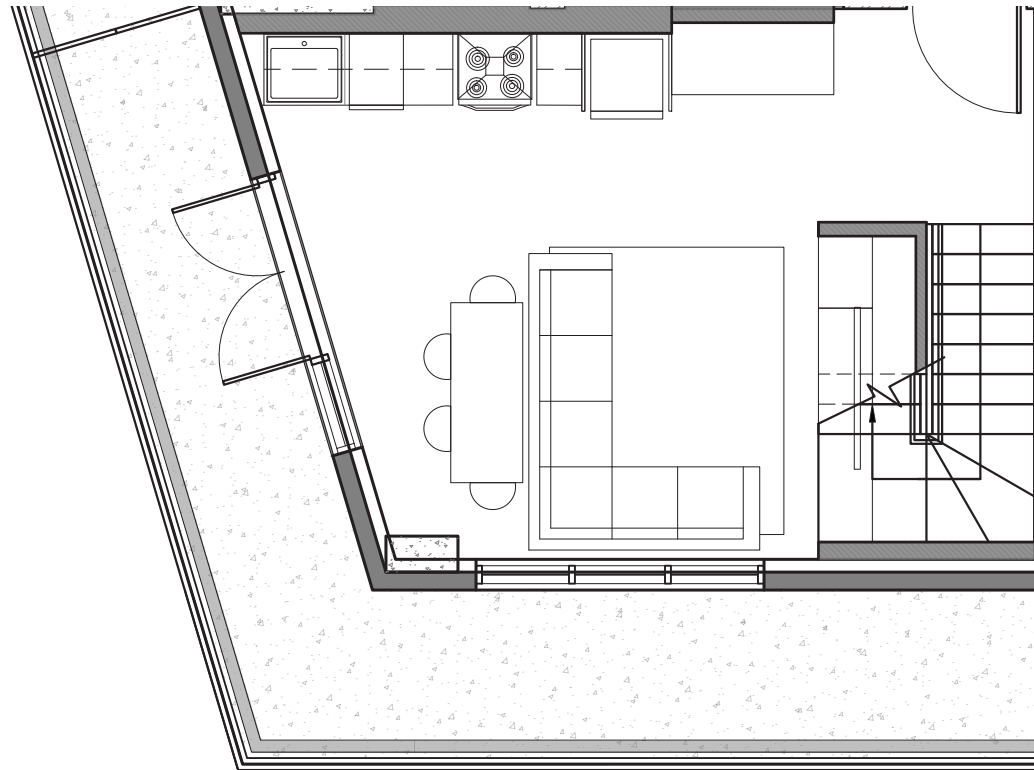
All dimensions are approximate and no responsibility is taken for any error, omission or misstatement.

Size and specifications are subject to change without notice. This plan is for illustrative purposes only and should be used as such.

GRAFTON PARK

1537 Brunswick St Halifax, Nova Scotia

Unit 611, 2-Storey Lower Floor



1 Bedroom - 1 Bathroom - 580 sq ft.

2-Storey Penthouse

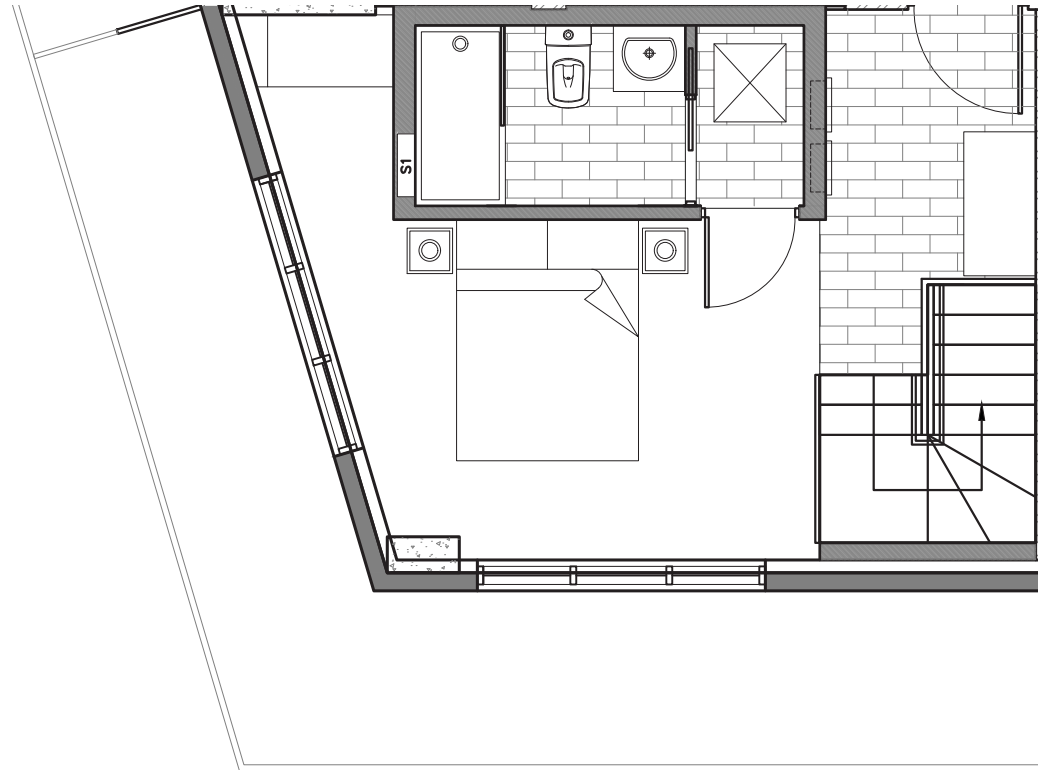
All dimensions are approximate and no responsibility is taken for any error, omission or misstatement.

Size and specifications are subject to change without notice. This plan is for illustrative purposes only and should be used as such.

GRAFTON PARK

1537 Brunswick St Halifax, Nova Scotia

Unit 611, 2-Storey Upper Floor



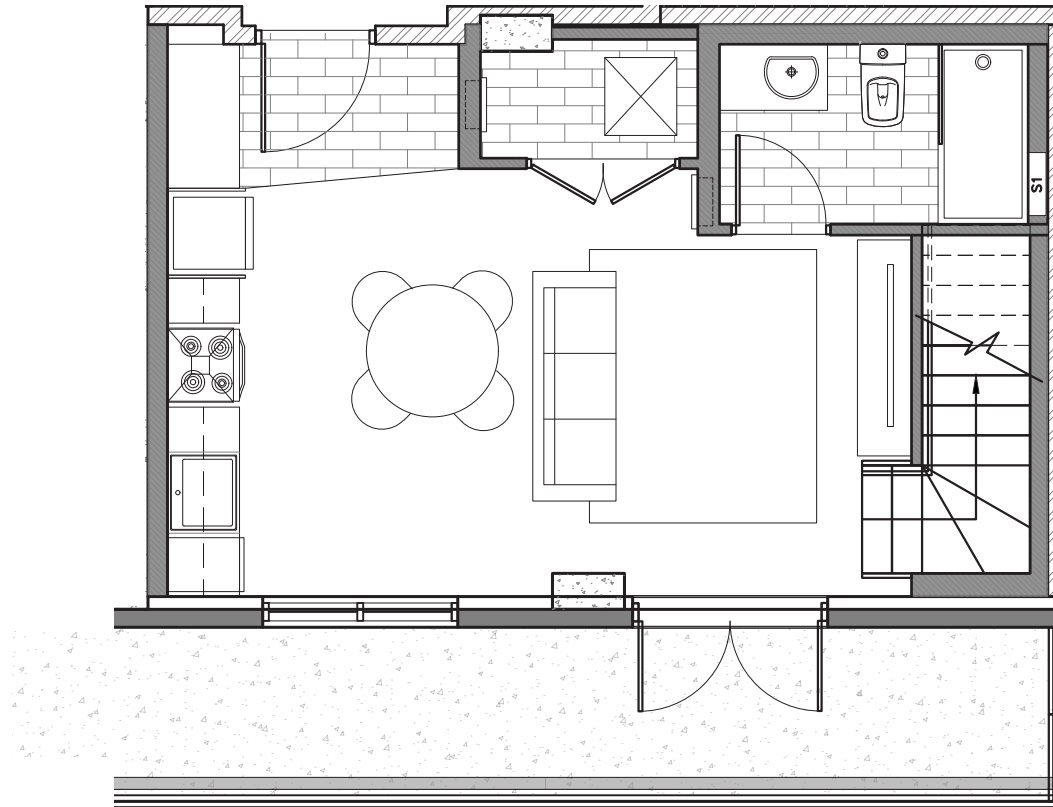
1 Bedroom - 1 Bathroom - 580 sq ft.
2-Storey Penthouse

All dimensions are approximate and no responsibility is taken for any error, omission or misstatement.
Size and specifications are subject to change without notice. This plan is for illustrative purposes only and should be used as such.

GRAFTON PARK

1537 Brunswick St Halifax, Nova Scotia

Unit 612, 2-Storey Lower Floor



2 Bedroom - 2 Bathroom - 745 sq ft.

2-Storey Penthouse

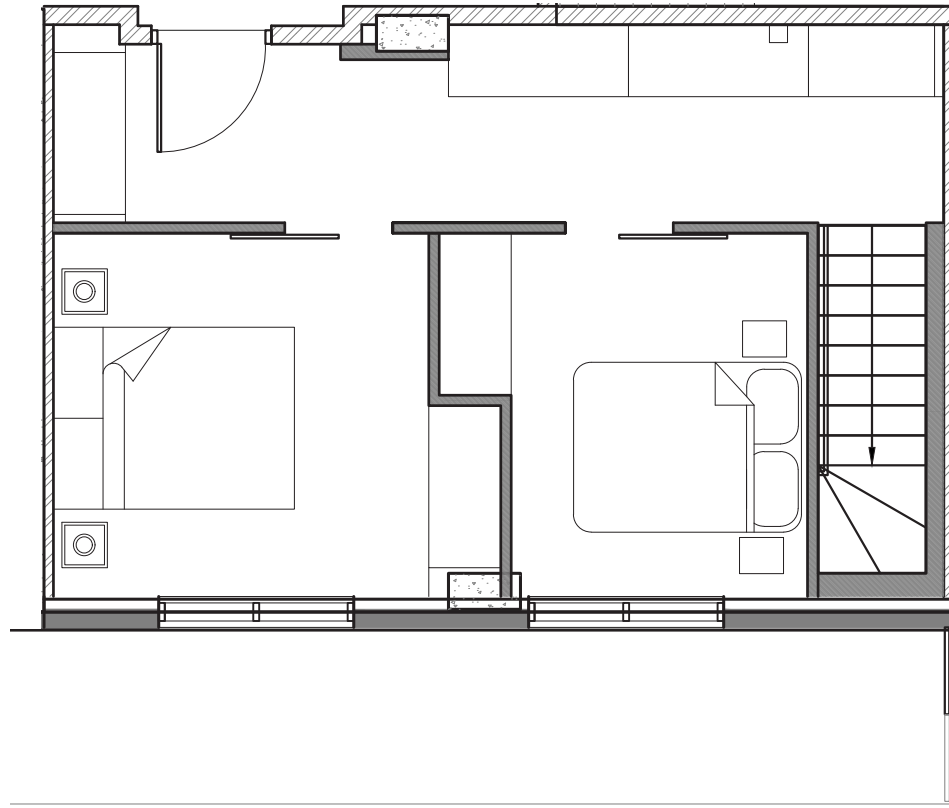
All dimensions are approximate and no responsibility is taken for any error, omission or misstatement.

Size and specifications are subject to change without notice. This plan is for illustrative purposes only and should be used as such.

GRAFTON PARK

1537 Brunswick St Halifax, Nova Scotia

Unit 612, 2-Storey Upper Floor



2 Bedroom - 2 Bathroom - 745 sq ft.

2-Storey Penthouse

All dimensions are approximate and no responsibility is taken for any error, omission or misstatement.

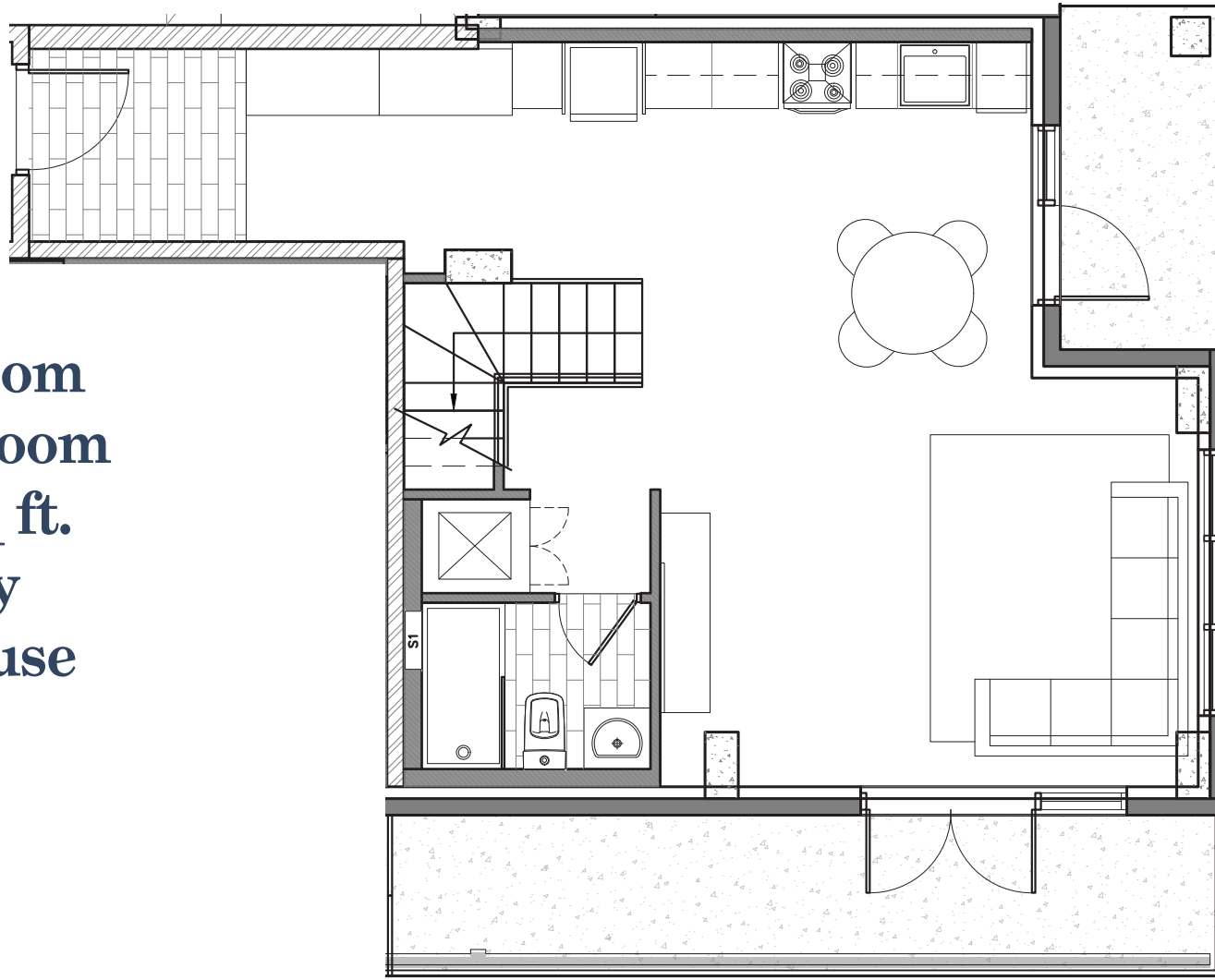
Size and specifications are subject to change without notice. This plan is for illustrative purposes only and should be used as such.

GRAFTON PARK

1537 Brunswick St Halifax, Nova Scotia

Unit 613, 2-Storey Lower Floor

2 Bedroom
2 Bathroom
1,075 sq ft.
2-Storey
Penthouse



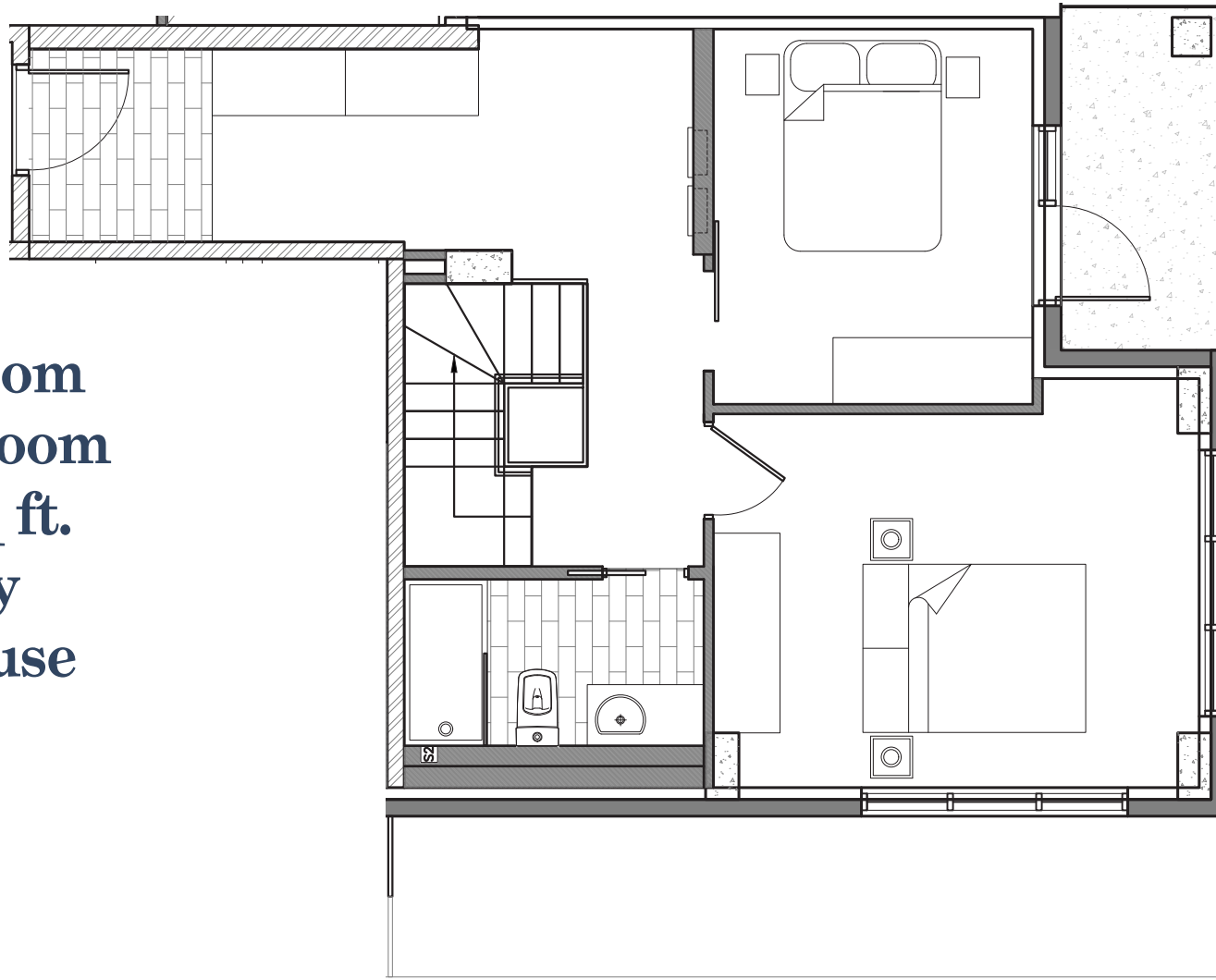
All dimensions are approximate and no responsibility is taken for any error, omission or misstatement.
Size and specifications are subject to change without notice. This plan is for illustrative purposes only and should be used as such.

GRAFTON PARK

1537 Brunswick St Halifax, Nova Scotia

Unit 613, 2-Storey Upper Floor

2 Bedroom
2 Bathroom
1,075 sq ft.
2-Storey
Penthouse

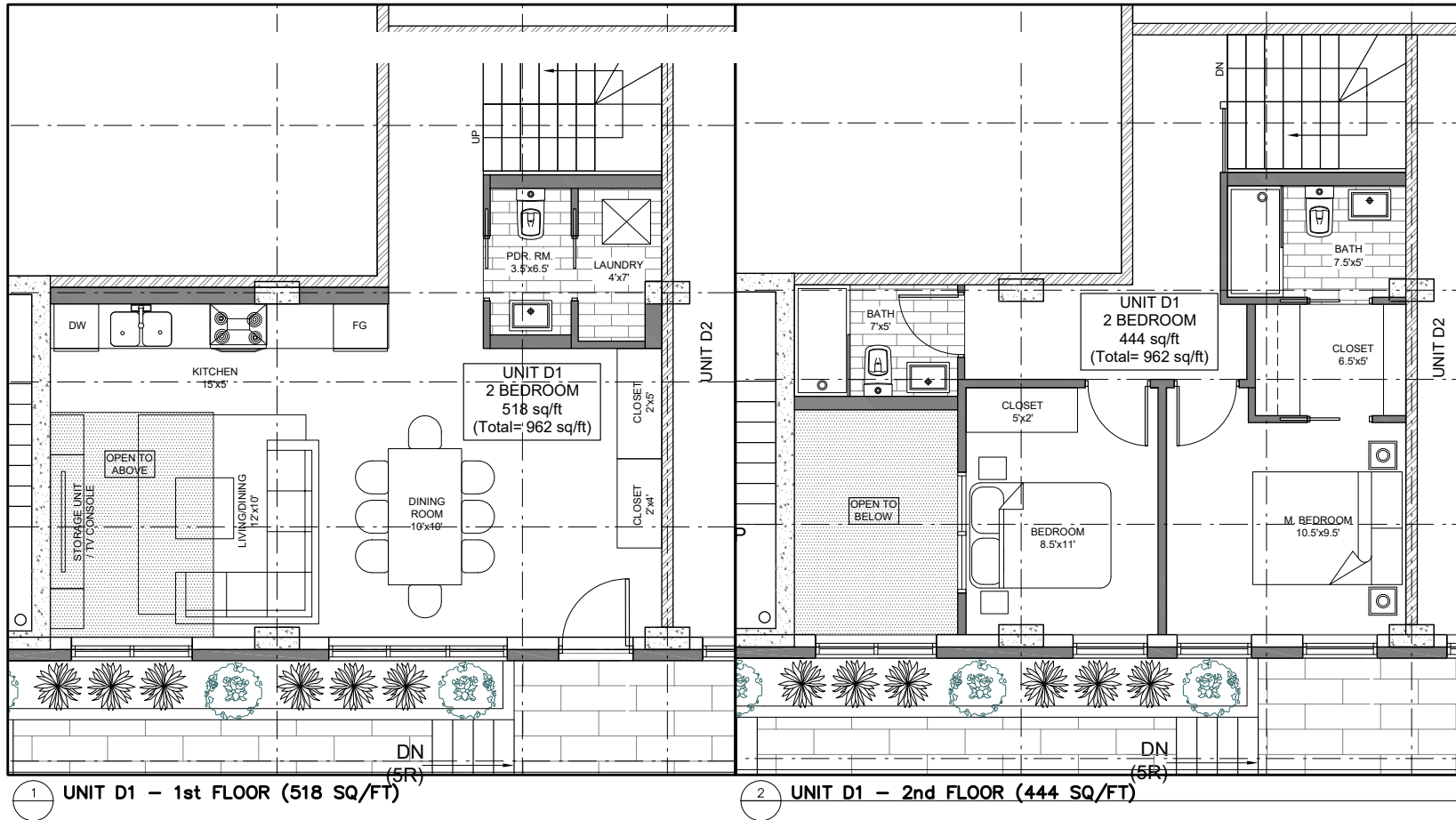


All dimensions are approximate and no responsibility is taken for any error, omission or misstatement.
Size and specifications are subject to change without notice. This plan is for illustrative purposes only and should be used as such.

GRAFTON PARK

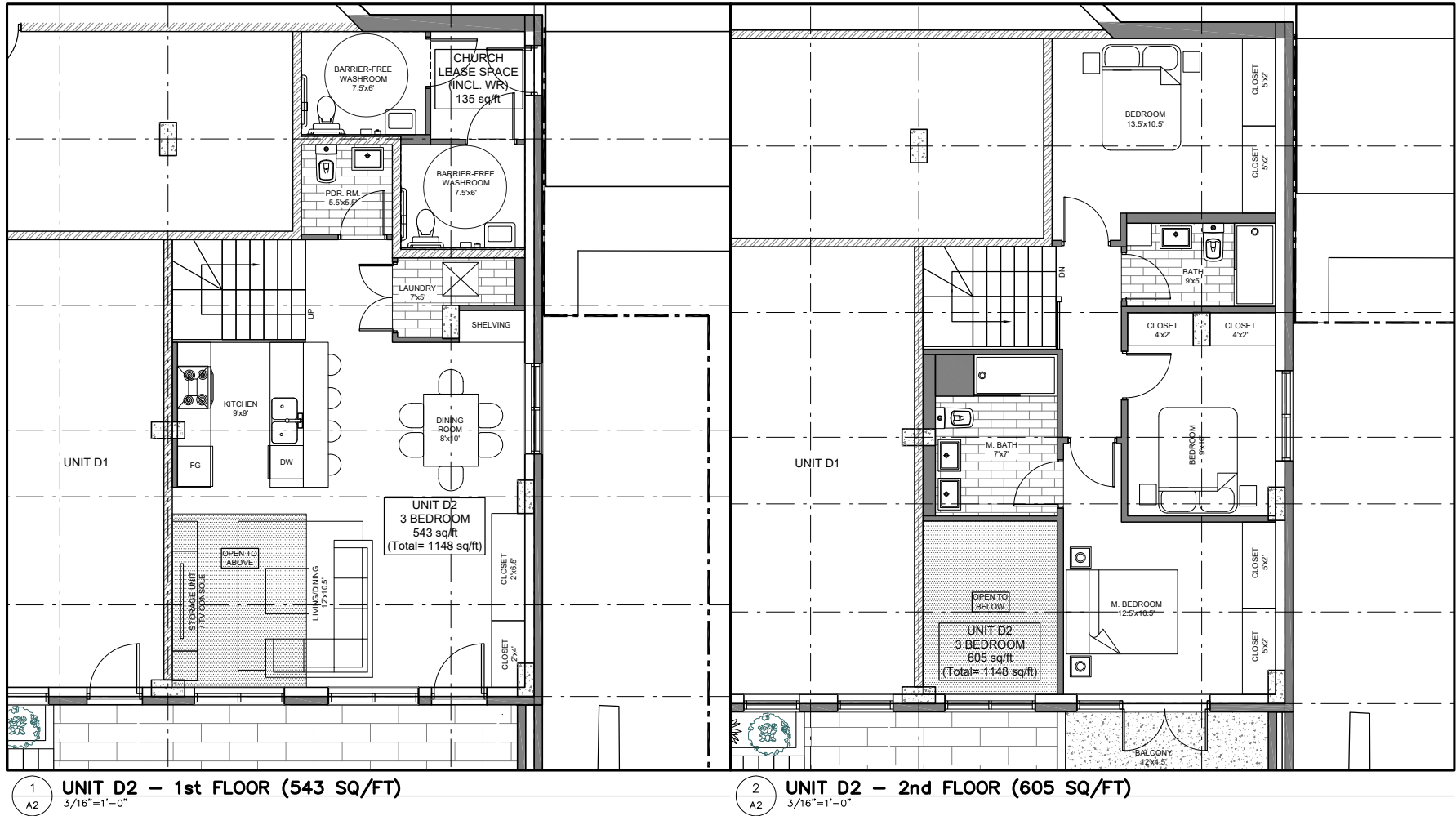
1537 Brunswick St Halifax, Nova Scotia

Townhouse D1, 2-Storey



2 Bedroom - 3 Bathroom - 985 sq ft. 2-Storey Townhouse

All dimensions are approximate and no responsibility is taken for any error, omission or misstatement. Size and specifications are subject to change without notice. This plan is for illustrative purposes only and should be used as such.



2 Bedroom - 2 Bathroom - 1,010 sq ft. 2-Storey Townhouse

All dimensions are approximate and no responsibility is taken for any error, omission or misstatement. Size and specifications are subject to change without notice. This plan is for illustrative purposes only and should be used as such.