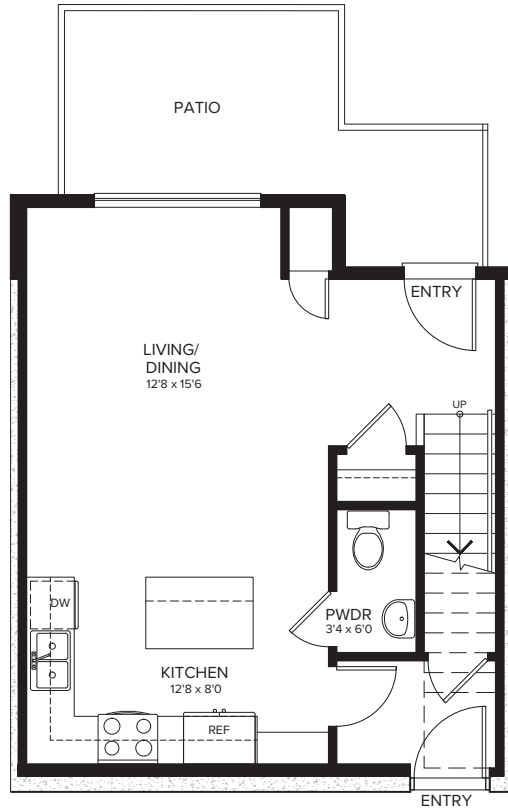


# Proxima

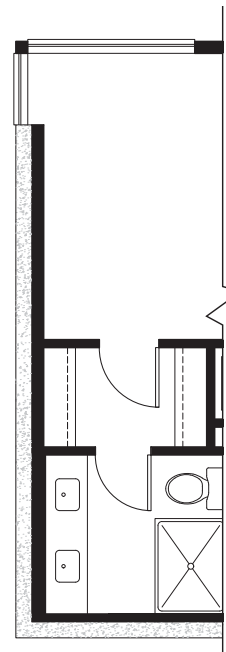
1229 Richter Street, Kelowna, BC



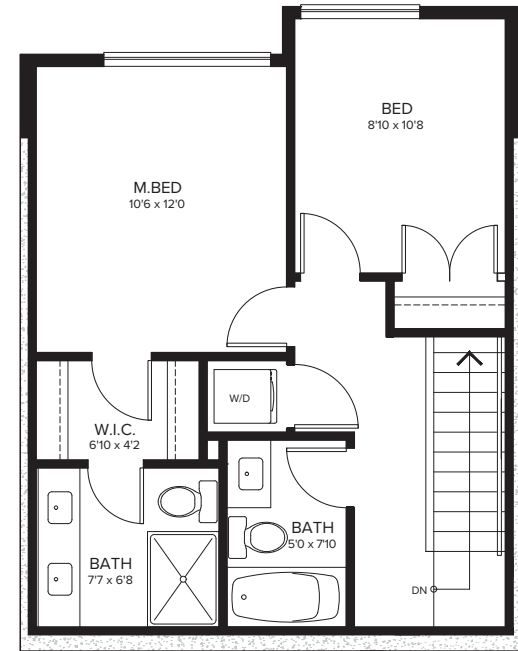
G1 LEVEL 1517 SQ.FT.  
ALTERNATE



G LEVEL 1504 SQ.FT.



G LEVEL 2557 SQ.FT.  
ALTERNATE



G1 LEVEL 2545 SQ.FT.



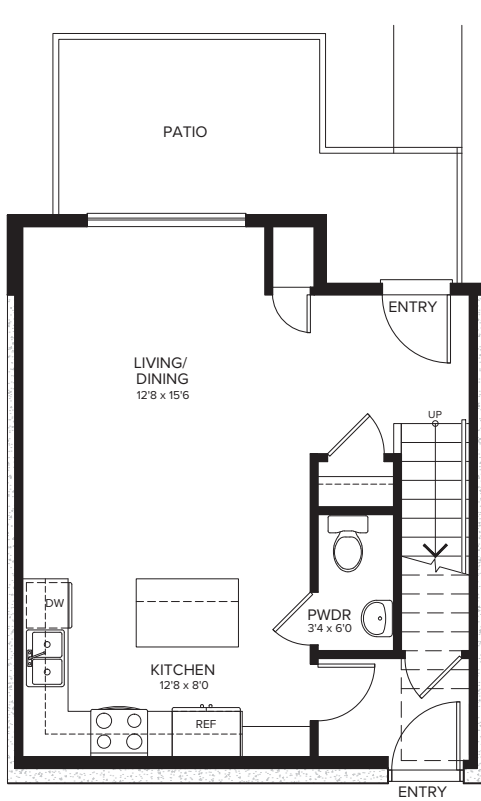
CANADIAN APARTMENT  
PROPERTIES • REIT

**Plan GG1 - 2 Bedroom Townhouse - 1,000-1,150 sq.ft.**

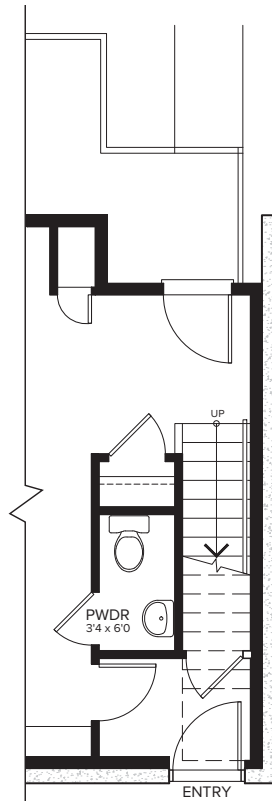
All dimensions are approximate and no responsibility is taken for any error, omission or misstatement. Size and specifications are subject to change without notice. This plan is for illustrative purposes only and should be used as such.

# Proxima

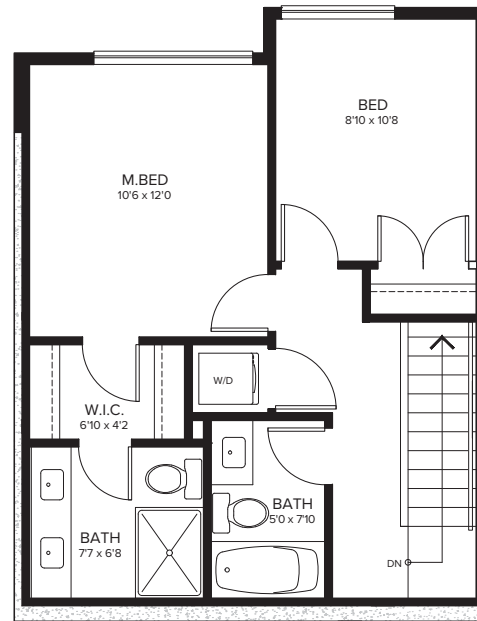
1229 Richter Street, Kelowna, BC



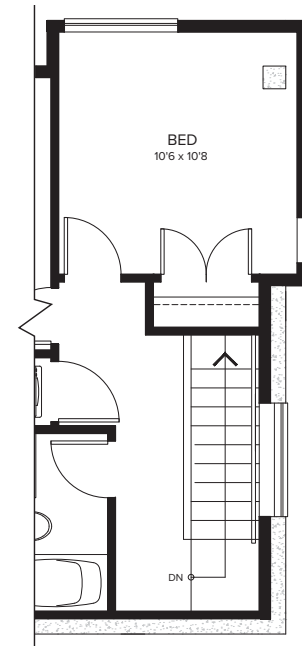
G LEVEL 1504 SQ.FT.



G2 LEVEL 1515 SQ.FT.  
ALTERNATE



G LEVEL 2545 SQ.FT.



G2 LEVEL 2570 SQ.FT.  
ALTERNATE



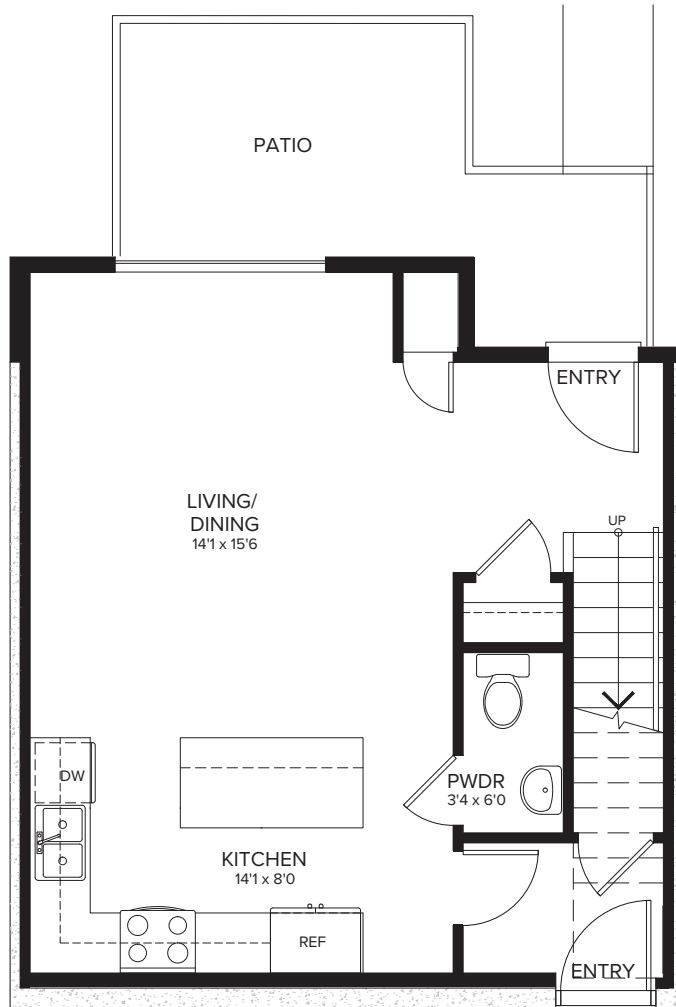
CANADIAN APARTMENT  
PROPERTIES • REIT

**Plan GG2 - 2 Bedroom Townhouse - 1,000-1,150 sq.ft.**

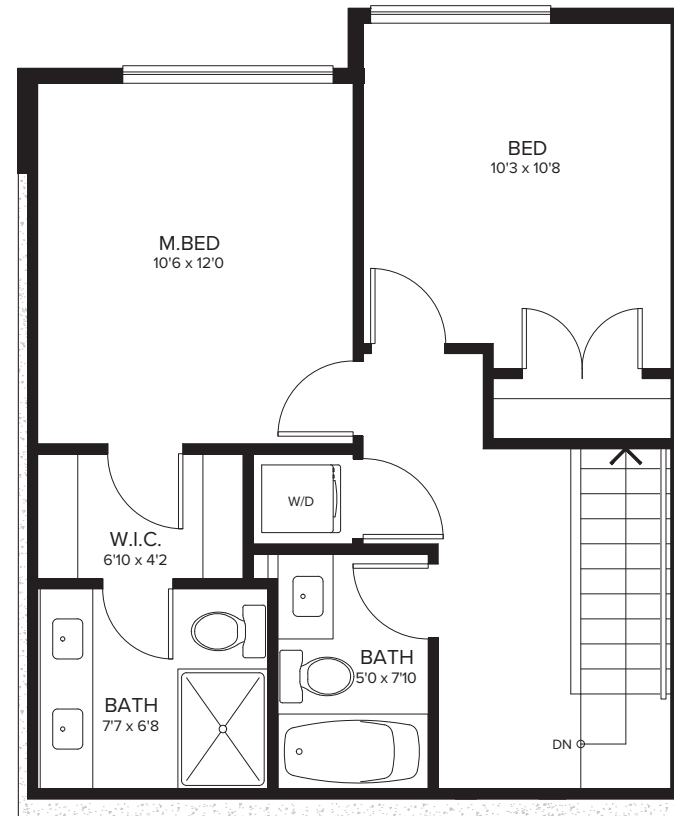
All dimensions are approximate and no responsibility is taken for any error, omission or misstatement. Size and specifications are subject to change without notice. This plan is for illustrative purposes only and should be used as such.

# Proxima

1229 Richter Street, Kelowna, BC



H LEVEL 1539 SQ.FT.



H LEVEL 2583 SQ.FT.

All dimensions are approximate and no responsibility is taken for any error, omission or misstatement. Size and specifications are subject to change without notice. This plan is for illustrative purposes only and should be used as such.

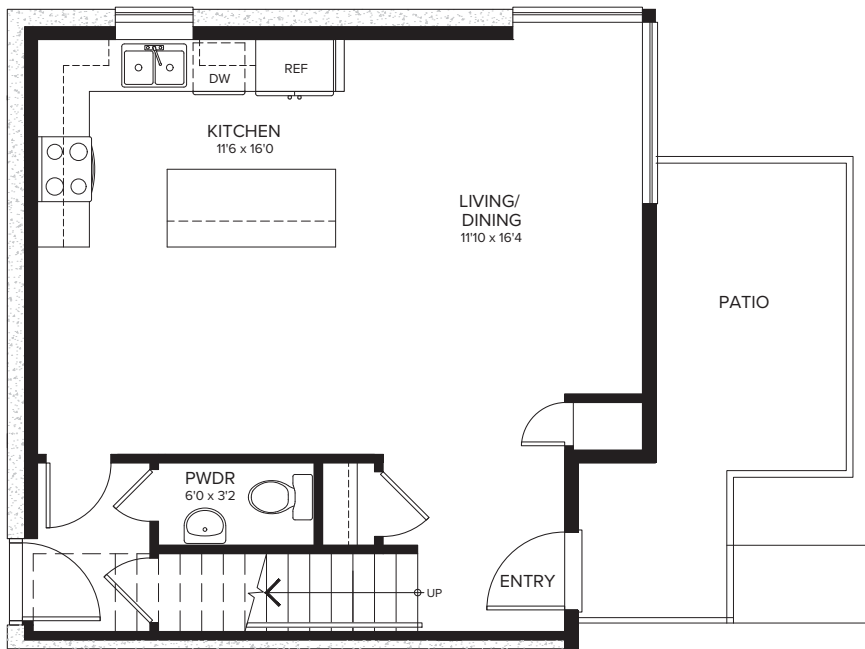


CANADIAN APARTMENT  
PROPERTIES • REIT

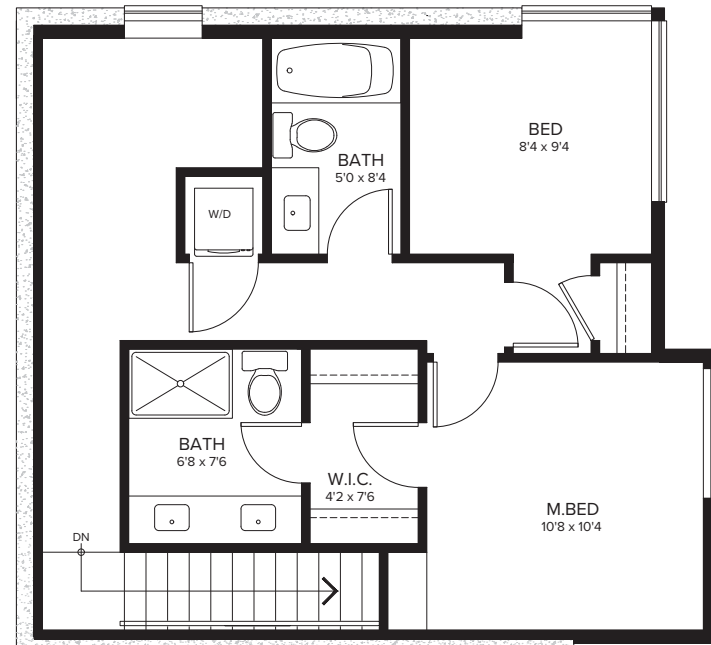
**Plan H - 2 Bedroom Townhouse - 1,000-1,150 sq.ft.**

# Proxima

1229 Richter Street, Kelowna, BC



H1 LEVEL 1595 SQ.FT.



H1 LEVEL 2639 SQ.FT.



CANADIAN APARTMENT  
PROPERTIES • REIT

**Plan H1 - 2 Bedroom Townhouse - 1,000-1,150 sq.ft.**

All dimensions are approximate and no responsibility is taken for any error, omission or misstatement. Size and specifications are subject to change without notice. This plan is for illustrative purposes only and should be used as such.