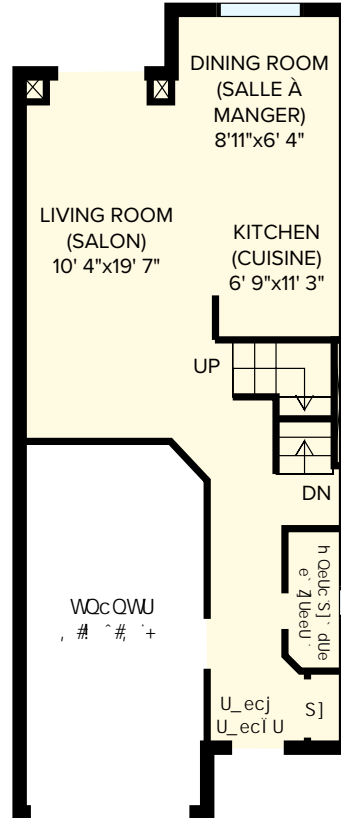


# Forestview Townhomes

512 Woodcliffe Private, Ottawa, ON, K1C 7P7



CANADIAN APARTMENT  
PROPERTIES • REIT

3 Bedroom (5 1/2)

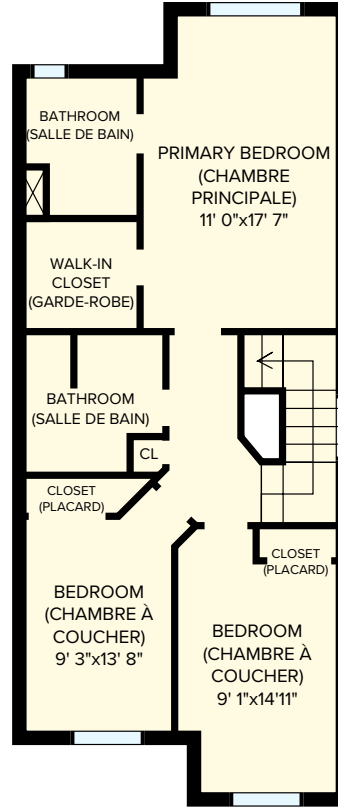
Main Floor 518 sq.ft (pi<sup>2</sup>)

Total Floor Area 1692 sq.ft (pi<sup>2</sup>)

All dimensions are approximate, and no responsibility is taken for any error, omission, or misstatement. Size and specifications are subject to change without notice. This plan is for illustrative purposes only and should be used as such.  
Toutes les dimensions sont approximatives. Les grandeurs et les spécifications sont modifiables sans préavis. Toutes les illustrations sont des vues d'artiste. L'espace utile véritable des planchers peut varier légèrement des aires de plancher stipulées.

# Forestview Townhomes

512 Woodcliffe Private, Ottawa, ON, K1C 7P7



All dimensions are approximate, and no responsibility is taken for any error, omission, or misstatement. Size and specifications are subject to change without notice. This plan is for illustrative purposes only and should be used as such. Toutes les dimensions sont approximatives. Les grandeurs et les spécifications sont modifiables sans préavis. Toutes les illustrations sont des vues d'artiste. L'espace utile véritable des planchers peut varier légèrement des aires de plancher stipulées.



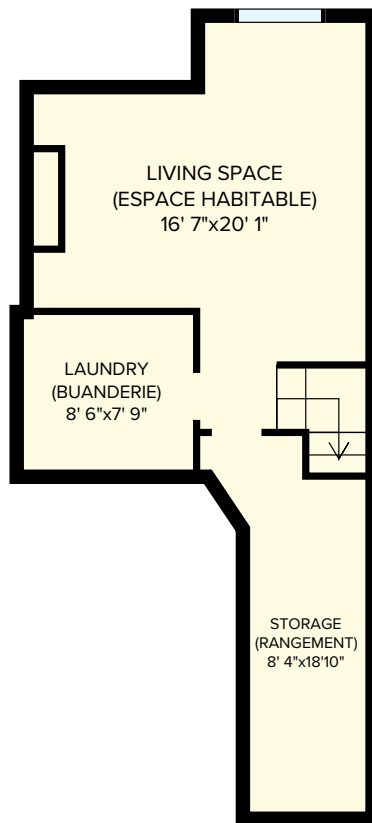
CANADIAN APARTMENT  
PROPERTIES • REIT

**3 Bedroom (5 1/2) Second: `ccf + %\$ sq.ft (pi²)**

.....HCU: `ccf 5fYU% - &ge"Zitil] &L

# Forestview Townhomes

512 Woodcliffe Private, Ottawa, ON, K1C 7P7



All dimensions are approximate, and no responsibility is taken for any error, omission, or misstatement. Size and specifications are subject to change without notice. This plan is for illustrative purposes only and should be used as such.  
Toutes les dimensions sont approximatives. Les grandeurs et les spécifications sont modifiables sans préavis. Toutes les illustrations sont des vues d'artiste. L'espace utile véritable des planchers peut varier légèrement des aires de plancher stipulées.



CANADIAN APARTMENT  
PROPERTIES • REIT

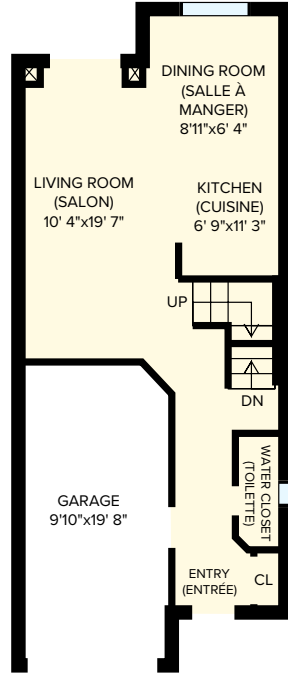
**3 Bedroom (5 ½)**

**Basement 464 sq.ft (pi<sup>2</sup>)**

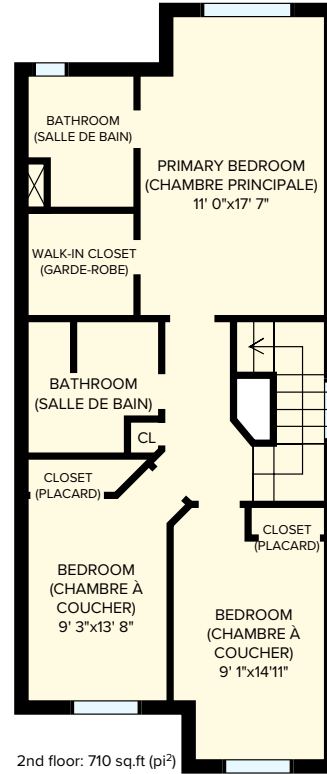
**Total Floor Area 1692 sq.ft (pi<sup>2</sup>)**

# Forestview Townhomes

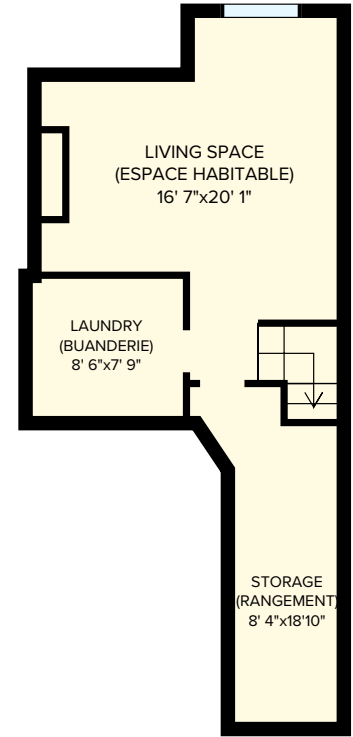
512 Woodcliffe Private, Ottawa, ON, K1C 7P7



Main floor: 518sq.ft (pi<sup>2</sup>)



2nd floor: 710 sq.ft (pi<sup>2</sup>)



Basement: 464sq.ft (pi<sup>2</sup>)



CANADIAN APARTMENT PROPERTIES • REIT

3 Bedroom (5 1/2)

Total Floor Area 1692 sq.ft (pi<sup>2</sup>)

All dimensions are approximate, and no responsibility is taken for any error, omission, or misstatement. Size and specifications are subject to change without notice. This plan is for illustrative purposes only and should be used as such. Toutes les dimensions sont approximatives. Les grandeurs et les spécifications sont modifiables sans préavis. Toutes les illustrations sont des vues d'artiste. L'espace utile véritable des planchers peut varier légèrement des aires de plancher stipulées.